

FREE

The Waterline News

Distributed to outlets in Tooradin, Koo Wee Rup, Lang Lang, Nyora, Loch, Kernot, Grantville, Corinella, Coronet Bay, Bass, San Remo, Newhaven, Cowes, Phillip Island, French Island and Wonthaggi.

Also available by free email subscription and online at www.waterlinenews.com.au



Volume 3

12

August 2017

Grantville

Gateway to the Bass Coast?

What do you think?

Page 7



Photo - Gayle Robertson

Vinyl Layer

Expert laying of ...
Sheet Vinyl. Vinyl Tiles.
Vinyl Planks.
Laminate & Floating Timber Floors.
No job too small. Obligation free
quotes.

Contact - I & S Meddings Flooring Contractors

0419 192 542



LANG LANG DISTRICT FUNERAL SERVICE

1 WESTERNPORT RD, LANG LANG

DIANNE COMBER - 0418 328 205

EMAIL: dianne@ldfs.com

'Compassion, Dignity & Respect with Quality Service'.

- * *Personal Care - 24 hrs a day*
- * *Servicing all areas*
- * *Pre-paid & Pre-Arranged funeral plans available.*

*'Let me be there to help you, in your time of need.
We've been there and we care.'*

From the mountains to the sea
Alex Scott and staff providing

CLASSIC REAL ESTATE SERVICE *Since 1886*



Madelyne Golby
Sales Agent
Debbie Golby
Rental Manager
Janine Milton
Office Manager

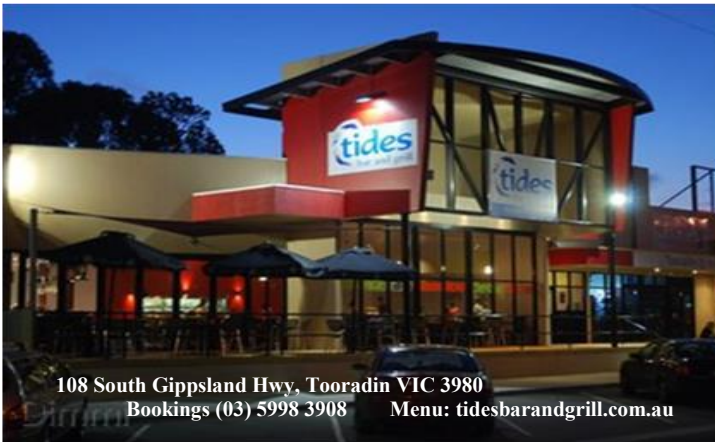
Gordon Waterson
Sales Agent
Jess Endres
Holiday Rentals
Robb Lawrie
O.I.E.C

CALL OUR TEAM NOW FOR A FREE MARKET APPRAISAL

5678 8433 OPEN 7 DAYS

**ALEX SCOTT
AND STAFF**

A 1505 Bass Highway, Grantville W www.alexscott.com.au E sales@alexscottre.com.au



108 South Gippsland Hwy, Tooradin VIC 3980
Bookings (03) 5998 3908 Menu: tidesbarandgrill.com.au



**Accountant
&
Tax Agent**

in Lang Lang
Book online or call

- \$99 Individual Tax Returns*
- Business & SMSF Tax
- Business Advice
- Xero setups & training



T: 1300 865 624

E: info@flourishingfigures.com.au

W: www.flourishingfigures.com.au

*Payment is required at the time of the appointment & fee excludes complex returns



ACCREDITED
MASTER
ELECTRICIAN



Clean Energy Council
MEMBER



3.0Kw System, The Gurdies



6.0Kw System, Inverloch RSL



4.5Kw System, Coronet Bay

WHY CHOOSE US TO INSTALL YOUR SOLAR POWER?

- We are a local, family-owned and operated business, based in Lang Lang.
- We are fully qualified Master Electricians, working to the highest standards of the industry.
 - We have over eight years experience in the solar power industry.
- We have installed over 1000 systems across Victoria, ranging from small to over 100Kw.
 - We don't believe in cutting costs and use only high quality products for our systems.

Call Sam & Melanie Leighton on 03 5997 5998 to arrange a free quote,
or visit www.sunscapeelectrical.com.au to find out more!





Celebrating Bright Futures Together at Newhaven

Newhaven College is celebrating a significant milestone of its now fourteen year journey to build a new school.

The new Senior School and Art, Science and Technology Wing is on schedule for completion this year and preparations are in place to welcome Year 10-12 students to the Phillip Island Road Campus in 2018.

Originally purchased in 2004, the 82 acres that is now the Phillip Island Road campus has undergone a planned staged development to transform from farm land into the state of the art independent school that we see today.

The original vision of Newhaven College's founders to provide a comprehensive ecumenical education built on Christian values holds true to this day, and will continue in the future thanks to the leadership of the Board of Directors and College Principal, Gea Lovell, who dedicate countless hours to ensure that Newhaven College is the best it can be.



One Choice from Prep to Year 12

Enrolments are invited for every year level, with the main points of entry to the College being Prep and Year 7, however the demand for new enrolments at Year 7 has exceeded the number of available places in recent years.

The Junior School has two small classes at each year level which increases to four classes from Years 7 onwards, so enrolment at Prep is recommended to ensure a place for your child in Year 7 and beyond.

Enrol Now for Prep 2018 & 2019

The Prep Transition Program will commence in October for students starting school in 2018 and a small number of places are still available. Interviews for Preps commencing in 2019 are also about to commence.

The Prep Transition Program builds confidence and independence to provide the best possible start to school and it is open to all children, not just those enrolled at Newhaven College. A fun learning activity session each week explores different areas of the school and the children meet teachers and other children in an informal setting. The sessions include Classroom Story Time, Perceptual Motor Program, Music, Drama, Young Artists, Little Builders, Love the Library, being special guests at a Junior School assembly, and concludes with an Orientation Day in December.

Scholarship Applications Invited

Students entering Year 10, 11 and 12 in 2018 are encouraged to apply for a special Senior General Excellence Scholarship that is being offered to celebrate the opening of the new Senior School. General Excellence Scholarships are awarded to students who are able to demonstrate outstanding abilities across a broad range of areas including academic, sporting, performing arts, leadership and community involvement.

Please complete the application form that is available from www.newhavencol.vic.edu.au/enrolments/scholarships. Applications close Thursday 31 August 2017.

2004 82 acres of land at what is now known as our Phillip Island Road Campus was purchased for future development.

2005 The Year 9 Environmental Centre opened in July with 108 students.

2006 The oval was constructed and sown and Stage One of the Pavilion commenced.

2011 Prep to Year 6 relocated from Boys Home Road to the newly built Junior School.

2012 A second storey was added to the Pavilion and the first multipurpose sport court was built.

2013 Two extra rooms were added to Junior School to allow for growth.

2014 Year 5 to 8 students moved into the new purpose built Middle School.

- The Trade Skills Centre and Food Technology Wing were completed.

- A second multipurpose court was built.

2015 The Administration and Library wing opened in July.

2016 Building of the new Senior School and the Specialist Art, Science and Technology wing commenced and will open in 2018.

2017 A 243kW rooftop solar system was installed on three buildings that will save over 400 tons of greenhouse gas emissions each year. The installation will be paid off over four years and will then generate income as power is exported to the grid.

VISIT NEWHAVEN COLLEGE

You are invited to visit Newhaven College to experience school life in action at a College Tour. The next tours for 2017 are at 9.30am on Wednesday 30 August and Thursday 19 October.



1770 Phillip Island Road,
Phillip Island
Ph: 5956 7505
www.newhavencol.vic.edu.au



Mortgages and Leasing

Located in LANG LANG and KOO WEE RUP

We also offer a MOBILE mortgage broking service; we can come to you at a time most convenient to you, including evenings in your home.

Have you reviewed your Home Loan in the last 3 years?
Did you know our service to you is **FEE FREE***



Contact our friendly team for your Home Loan Health Check.

Just answer 6 easy questions and we can provide a **QUICK COMPARISON** to show you how competitive your mortgage is.

Ph 03 5977 2024

* There is no need for us to charge a fee as we receive a commission from the lender that you choose. This commission is not added to your loan. Our service is at a cost to the lenders and not yourself.

Black Fish

MEDICAL CLINIC

RECEIVE FRIENDLY, CARING, PROFESSIONAL SERVICE AT BLACK FISH MEDICAL CLINIC

Come to Black Fish medical Clinic for:

- * Check Ups
- * Pathology
- * Men's Health
- * Mental health plans
- * Cryotherapy for warts and benign lesions
- * Injectable anti wrinkle treatment and dermal fillers
- * Development of care plans
- * Admitting rights to Koo Wee Rup Regional Health Service Beds
- * Children's health & family planning
- * Immunisations & vaccinations
- * Stop Smoking Plans
- * All Medicare rebateable items Bulk Billed
- * Health Assessments
- * Women's Wellbeing
- * Diabetes education

Want to know more:

- * To see one of our GP's or Health Professionals, please call ahead to make an appointment.

Monday to Friday 8.30am - 6pm

Saturday 9am - 4pm

Sunday 10am - 4pm

215 – 235 Rossiter Road, Koo Wee Rup VIC 3981
Phone: (03) 59 971 819 | Fax: (03) 59 971 980

Email: reception@blackfishmedical.com.au



Your three bin collection service

Starting 4 September 2017



Weekly



- Fruit and vegetable scraps
- Meat scraps, bones, fish and seafood
- Dairy products
- Bread, bakery products, rice and pasta
- Tea and coffee grounds
- Tissues and paper towels
- Pet manures and compostable kitty litter
- Lawn clippings, garden prunings and weeds
- Twigs and branches under 100mm in diameter

Fortnightly



- Glass bottles and jars
- Solid plastic containers, bottles and tubs
- Aluminium cans, trays and foil
- Steel cans, aerosols and spray cans
- Milk and juice cartons, Tetrapaks
- Cardboard boxes and paper
- Plastic cutlery
- Newspapers and magazines

Fortnightly



- Broken glass and mirrors
- Crockery
- Nappies
- Foam and polystyrene
- Plastic bags & soft plastics
- Old clothing

For more information visit www.basscoast.vic.gov.au/organics or contact Council on 1300 BCOAST (226 278) or (03) 5671 2211

The Waterline News - August

FROM THE EDITOR'S DESK
editor@waterlinenews.com.au



A preview edition of The Waterline News was circulated in August 2014, with the first edition, all 12 pages, distributed in September.

Welcome to the August edition of The Waterline News.

Winter's almost gone and we are looking forward to spring.

With spring in mind, I thought it was time for a bit of spring-cleaning through the pages of The Waterline News and have made a few subtle changes.

This is a significant edition, in as much as it completes our third full year, with our actual birthday edition next month.

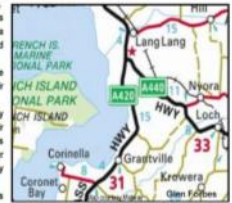


GRANTVILLE & DISTRICT GETS ITS OWN VOICE

Grantville and District is to get its own voice with the launch of The Waterline News on September 15. The Waterline News will cover the area from Lang Lang through Nyora, Loch, Kernot, The Gardens, Pioneer Bay, Grantville, Corinella, French Island, Coronet Bay and Glen Forbes. Production will be completely independent, on a not-for-profit basis, with accounts audited each year and any surplus, after expenses, distributed to local community organisations and projects through the Grantville and District Residents and Ratepayers Association. Distribution and content of the Waterline News starts at Lang Lang where we believe there is a significant benefit from the two towns working more closely together. Lang Lang provides the nearest supermarket facilities for most Grantville and district residents along with a range of specialty shops which are not available, and complement those, we now have in Grantville. All local Community Groups will have a listing in The Waterline News with the opportunity to promote their special events. There will also be the opportunity for Community Centres at Lang Lang and Corinella to promote their activities, and we will also welcome news from the Bass Valley Community Centre. Even though it is outside of our target area it's facilities and programs are used by many residents in the Grantville and District area. The Waterline News needs the support of advertisers.

within the area to cover production expenses and needs you to support our local businesses in return. In addition to Local community news we are planning a range of interesting features which are detailed inside this special four page preview edition. The first full edition will be published on September 15 and will be 12 pages with colour front and back cover. The Waterline News is your local magazine and we look forward to your submissions to our regular columns and to our letters section with a request that we would like to keep political issues out of the magazine and leave them to the daily and weekly papers. The Waterline News Target Area.

The Waterline News Target Area.



The Waterline News is also available online at www.waterlinenews.com.au

ALL PREVIOUS EDITIONS OF THE WATERLINE NEWS ARE AVAILABLE
www.waterlinenews.com.au

Section	Page	Section	Page
Advertisers index	36	Food	18
Arts, Books & Writing	30-31	French Island News	20-22
Bass Coast Post in print	23	Gardening & Outdoors	35
Book Review	13	Greg Hunt's news	33
Community Notes, Directory, News, and Community Centre updates	6-12	Health & Lifestyle	13-15
Contact Details	5	History	25-26
Councillor Pamela Rothfield, Mayor	29	Markets, Op Shops and local Halls	9
Entertainment & Lifestyle	16 - 17	Our part of the world	29
Environment issues	32	Our People - Tributes	19
		Philosophy, Trivia & Quiz	24
		Short Story Special	27-28
		Sports & Leisure	34

THE WATERLINE NEWS
 Editor & publisher Roger Clark
 PO Box 184 Grantville 3984
 Phone 0410 952 932
 Office Hours Mon- Fri 8.30am - 4.30pm
 Email: editor@waterlinenews.com.au
 Website: www.waterlinenews.com.au
 ABN 97 395 483 268



ADVERTISING RATES (Sizes can vary slightly)
 Small 6cm x 5cm \$ 20.00
 Small 1.5 (Bus Card) 6cm x 9.5cm \$ 27.50
 Double Small 6cm x 10cm \$ 37.50
 1/4 Page 9.5cm x 13.5cm \$ 55.00
 1/2 Page 19.5cm x 13.5cm \$ 85.00
 Full Page 19.5cm x 27cm \$ 135.00
 Colour ads + 100% - When available
 Email: editor@waterlinenews.com.au
 Advertising Deadline 1st each month

proof readers, and a couple of special friends and their husbands, who help with the deliveries each month, rain, hail or shine.

Then my long suffering wife, who completes the team, contributing ideas, some proof reading and who has to put up with me while each edition is in production. The other part of the team, behind the scenes and often with little credit, are the band of contributors who compile submissions for their various community groups and get them in somewhere near deadline time.

Much has changed in the original aim and philosophy behind the development of the magazine.

Our distribution area has increased to almost double what was originally targeted and our email distribution and website visitor numbers continue to grow strongly.

The original aim to make space available to all community groups remains the same, and a lot of the community notices, that look like advertising, are in fact free community ads.

As editor, I am proud of what we have been able to achieve and look forward to another year ahead.

Roger Clark, Editor

www.waterlinenews.com.au

Distribution Area:
 We distribute to outlets through Tooradin, Koo Wee Rup, Lang Lang, Nyora, Loch, Kernot, Grantville, Corinella, Coronet Bay, Bass, San Remo, Newhaven, Cowes and French Island, and also send out copies by email. **If you would like a copy emailed to you each month, let us know.**



The Waterline News makes space available to all community groups in our distribution area and nearby for letting the community know about their activities and events.
Send us your details
 Deadline - 1st of each month.
 Distribute 3rd Thursday of each month
To ensure your message gets out there, make sure you get in before the deadline.



editor@waterlinenews.com.au

Disclaimer: All views expressed in The Waterline News are those of the author of each article, not the editor and publisher.

Community Notes



CORINELLA RATEPAYERS AND RESIDENTS ASSOCIATION

2017 Committee

President. Lyndell Parker.

Vice President. Peter Tait.

Secretary. David Laing.

Assistant Secretary. Wayne Maschette.

Treasurer. Michael Kelzke.

General Committee Members.

Brian Lloyd and Jackie Tait.

Every day is a good when you wake up and know that you love the place where you live! I am just one of many people who feel that when they wake up in Corinella, it's our little piece of paradise.

If you are one of those people who love Corinella, and would like to be involved in creating a legacy for the town, then the Bass Coast Shire Council would love to help you to do just that!

The Council's Public Art project is going to be in Corinella next year and would like to encourage anyone who has ideas to share, contact Rebecca Scott: Phone 5671 2761

art@basscoast.vic.gov.au

What exciting times for the Waterline towns, the next stage of The Edge of Us, Regional Art Victoria's Small Towns Transformation project is in the planning stages and is also keen to have the community involved and getting excited by the possibilities for the future of the project.

Keep checking their Facebook page for information and opportunities to become a part of something wonderful, creative, exciting, fulfilling, inspirational, and maybe.... just maybe you will be transformed by this amazing opportunity to be a part of four towns. You might become part of one of those "stories" that will be told in the future, everything that happened in the past, was once the future, was it not?

Speaking of the future, the Corinella Foreshore Reserve Committee of Management is working on Stage 1 of the Boat Launching facilities in Corinella.

The parking lot corner near the Jetty has been trimmed and a retaining wall installed, to extend the manoeuvring area for boats and trailers, a great help for the spring boating season when so many fishermen flock to our shores, and the boats and cars keep getting bigger and longer, that extra space will make a significant difference.

If you would like to make a difference, and be a part of helping to shape Corinella's future, we would like to invite you to join

the Corinella Ratepayers and Residents Association.

You are welcome to come to our next meeting, as our guests.

At the conclusion of the meeting we will be enjoying some social time with a free sausage sizzle, and a "cuppa " or two!

"On trend " topics will be covered by some very informative guest speakers, "All about Rubbish" being one such scintillating subject, and appears there is far more to rubbish than you might imagine! We are very fortunate to have our councillors in attendance, as well as our local MP.

The next meeting is our AGM, being held on Saturday 26th of August at the Corinella and District Community Centre, Balcombe Street entrance....10am till 12noon.

Love to see you there, it is a great way to make new acquaintances and future friends!

Lyndell Parker



President: Jean Coffey 0419 500 593

Secretary: David Pearce

0401 514 339

Our annual general meeting will be held at 10am on Saturday 19 August 2017 at the Corinella Community Centre.

All Tenby Point residents are invited to attend. Membership is just \$10 per household per year."

Meetings are held quarterly on Saturday mornings.



CORONET BAY RATEPAYERS & RESIDENTS ASSOCIATION

2017 Committee

President: David Buckingham

Vice President: Kevin Brown

Secretary: Stephanie Hartridge

Treasurer: Sebastian Nowakowski

General Committee Members:

Mel Gratton and Mark Hanrahan

No Report this month

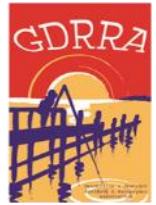


PIONEER BAY PROGRESS ASSOCIATION

Contact :

Zena Benbow
pbpa@bigpond.com

GRANTVILLE AND DISTRICT RATEPAYERS & RESIDENTS ASSOCIATION



2017-18 Committee

President: Roger Clark

Vice President: Darrell Egan

Secretary:

Treasurer: Sylvia Harris

General Committee Members:

Margaret Boyer, Robyn Good, Les Ridge and Sandy Ridge.

Membership Fees: \$10 single,

\$20 family

Payable to Sylvia Harris at the Post Office/Newsagency.

The next general meeting of the Grantville & District Ratepayers & Residents Association will be held on Thursday 31 July, at the Grantville Hall at 7.00pm.

Guest speaker at the meeting will be Jasmine Butler from the Bass Coast Shire Council.

Jasmine will be speaking on Strategic Planning and the future of Grantville.

Your chance to have put forward your ideas for our 'wish list'.

Despite having increased membership numbers significantly, the 2017 Committee is still looking for a Secretary, to manage the Association's office affairs.

At last month's Committee meeting, the decision was made not to proceed with Christmas in the Park this year.

This year we lost two vital long standing Committee members, Helen Zervopoulos and Kathy Hopkins, who were the driving force behind Christmas in the Park for many years.

Their departure left the current Committee with the difficult task of putting the event together in a short time, with no experience, which could have been a recipe for disaster.

Rather than put ourselves in that situation, the decision was taken to wait until 2018 to resurrect the event.

The Combined Churches Christmas Carols are still going ahead,

We hope you can make it to our 31 August general meeting.

We still need new members, particularly those who can offer hands on experience.

Email: gdrsecretary@gmail.com

LOCAL POLICE NETWORK

Bruce Kent Station Commander,

San Remo phone: 5678 5500

Mobile: 0411 837 467

email: bruce.kent@police.vic.gov.au

Emergency Dial 000

www.police.vic.gov.au



This work is copyright. Apart from any use permitted under the Copyright Act 1968, no part may be reproduced by any process, nor may any other exclusive right be exercised, without the permission of the publisher of The Waterline News.

Community Notes

Country Women's Association Vic Inc. Grantville Branch



POSTIE FASHIONS COLLECTION Pop up BOUTIQUE

Monday 11th September
At 1 PM

POSTIE FASHIONS
New seasons fashions
Sizes 6-26
Daily specials rack

GRANTVILLE COMMUNITY HALL Bass Highway Grantville

We invite your branch, members and your friends to our Annual fashions day
Entry \$5.00 Afternoon Tea Provided
RSVP

If you would like to attend
Please Contact
Betty 0418 396 863
Annie 5678 8037
For catering purpose

NEWHAVEN PRIMARY SCHOOL FETE

Melbourne Cup Weekend
Saturday 4th November 2017

Invitation To Stall Holders
Newhaven Primary School would like to Extend an invitation to Market Stall Holders to secure a Stall Position At our upcoming School Fete!

Newhaven Primary School is a small State School, our Annual School Fete being our biggest fundraising event on the calendar, with all proceeds going towards the upgrade & addition of facilities & activities that benefit our children in the coming year & beyond.

As a stall holder you will be allocated an outdoor space to sell your goods, with the hire of your space contributing directly to the school. Thousands of people attend each year, all keen to purchase fantastic products, JUST LIKE YOURS!

DETAILS –

When – Saturday November 4th 2017
9am – 2pm

Where – Newhaven Primary School
12-22 School Ave, Newhaven
Cost – Stalls from \$35, Car Boot Sales
Position \$20

Please email our school representative, Kellie, or ring the school and request the reservation form be emailed to you.
RSVP by 27th October 3.00pm
E: kelsmi@hotmail.com
(School): 5956 7326

We also welcome any product donations toward Fete Prizes, or you could kindly donate a percentage of your profits on the day!!

We look forward to your booking & thank you for your kind support for our little school.

LETTER TO THE EDITOR

There has recently been publicity surrounding the Coronet Bay / Corinella Precinct being the Gateway to the Bass Coast. Surely it seems more logical that Grantville is the natural gateway to the region: be it Phillip Island or Wonthaggi and beyond.

If Grantville did become the gateway and was promoted as such by the Council, it may follow:

- A supermarket,
- A tourist information centre established (maybe close the one at Wonthaggi),
- And if the Ramsar wetlands are to survive, an 'environment education centre' (based on the recently opened Bellarine Wetland Centre at Lake Connewarre State Government Reserve).

If done, Grantville could become your one stop shop: food, where to go, and how to protect the environment.

However I imagine by now, the Corinella / Coronet Bay precinct is 'underway' and Gateway Grantville is lost – it seems a pity.

Personally, I don't see how you can have a 'Gateway' at Corinella-Coronet Bay, when you have to drive more than ten kilometres past Grantville and turn off the highway to get to it?

Name and address supplied

Grantville Branch
Country Women's Association
Meets at the Grantville Hall on the second Monday of each month at 12.30pm.
Contact Betty 0418 396 863



YOUR LOCAL CHURCH IN GRANTVILLE – Bass Coast Community Baptist Church
Meets each Sunday at 4pm in the Grantville Transaction Centre meeting room.



This is your invitation to join us as we worship God and enjoy fellowship.
Contact and enquiries:
Pastor Barry McDonald ph. (03) 59953904

Your local Op-Shop is sponsored by the BCCBC – call in, browse and find a bargain! Ph. (03) 56788625



Community Directory



Send us your Community Group
Notices by **1st each month**
editor@waterlinenews.com.au

Loch Val 5659 4268 5952 1131
Woodleigh Vale Carol 5678 8041 Linda Morrison manager@pical.org.au

Artists' Society of Phillip Island
56-58 Church Street Cowes
For more information <http://aspi-inc.org.au/>

**Grantville & District Ambulance
Auxiliary**
Contact - Shelly 0417 593 497

Phillip Island Patchworkers
Meet on a Monday night from 7.30.
Contact - Lyn Duguid 0427 593 936
phillipislandpatchworkers@gmail.com

Australian Red Cross
Woodleigh Vale Branch
Contact Sheila Campbell 5678 8210

**Grantville & District Business & Tourism
Association**
President Neroli Heffer 5678 8548

Phillip Island Senior Citizens Club
Phone bookings 5952 2973
Email piscec123@gmail.com

Bass Coast Community Baptist Church
Minister - Barry MacDonald 5995 3904
OP SHOP open Mon-Saturday
Contact the Op Shop for details 5678 8625

**Grantville & District Ratepayers &
Residents Association**
Email gdrasecretary@gmail.com

Phillip Island Squares
Square Dancing, Bass Valley Community
Hall, Bass School Rd,
Contact: Carol 5952 5875

**Bass Coast L2P Learner Driver Mentor
Program** Wonthaggi
Leanne Tilley 5672 3731 or 0467 590 679

**Grantville & District Foreshore
Committee** Contact: Barbara Coles
bacoles@bigpond.net.au

Pioneer Bay Progress Association
Zena Benbow pbpa@bigpond.com

Bass Coast Strollers
Contact Liz Hart 5678 0346
Website: <http://basscoaststrollers.org/>

Grantville Recreation Reserve Committee
Pat Van 5997 6221

**Probus Club of Corinella and District
Inc.**
First Wednesday of each month at the Bass
Hotel.
Contact Heather Reid 0421 012 519
Rob Parsons 0402 852 300

Bass Friends of the RSL
Secretary Sue Kinniff 0418 588 596

Grantville Tennis Club Inc.
Contact Pat Van 5997 6221

Bass Valley Landcare
2-4 Bass School Rd, Bass 5678 2335

Kernot Uniting Church
1040 Loch-Kernot Road, Kernot
Contact Secretary Judy Hogan 0422 094 903

Probus Club of San Remo
Second Monday of the month (except
January) 10am at the Newhaven Public
Hall. Visitors Welcome.
Enquiries: Bob Andrews 0437 526 757

Corinella & District Probus Club
Heather Reid 0421 012 519

Lang Lang Bowling Club
Ian Painter 5997 6554 M: 0419 646 040
Email: langlangbowling@bigpond.com

Corinella Bowling Club Inc.
Balcombe Street Corinella.
Jacquie Carter 5678 0596

Lang Lang Community Centre
Coordinators Marg and Michelle
Phone 5997 5704
Email: llcc@langlang.net

**South Gippsland Arthritis Support
Group**
Contact: Adam 0408353785
Marg: 0417 154 057
Diane: 5658 1443

Corinella & District Community Centre
48 Smythe St Corinella. 5678 0777
Mon - Fri 10am - 4pm Keep up to date:
Facebook @corinellacommunitycentre
www.corinellacommunitycentre.org.au

Lang Lang Playgroup
(0-Preschool) Thursdays 9.30am
Contact Crystal 0473 077 125

**South Gippsland Mental Illness Carer's
Group**
Maggie 5658 1781 or Rosemary 5662 4352

**Corinella & District Men's Shed &
Woodies Group** Corinella Road
Contact: Ken Thomas 0427 889 191

Lions Club of Bass Valley
First Tuesday each month 6pm
Grantville Transaction Centre then third
Tuesday each month, Dinner at Bass Hotel.
Seeking new members.
Gayle Robertson 0408 509 259

South Gippsland Support after Suicide
Phone 9421 7640
Email southgippslandsas@gmail.com

Corinella Foreshore Committee
Contact Barbara Oates 0427 780 245

**Phillip Island Community Art & Craft
Gallery Inc.**
Cowes Cultural Centre Thompson Ave
All Enquiries Call Aleta 0419 525 609

Survivors of Suicide
Raising awareness to aid prevention
Jillian Drew 0413 056 165

**Coronet Bay, & Surrounds Playgroup
(0-4yrs)** Coronet Bay Hall
Mondays 10am—12noon
Contacts: Becky 0439 638 854
Ann 5678 0341

Phillip Island Indoor Carpet Bowlers
Come and join the fun
Court, Cowes Contact Jack 0434 944 380

St Pauls Anglican Church Bass
HC at 12.30pm every Sunday
Contact Sandy Ridge 5997 6127

Coronet Bay Adult Social Club
Tuesday 7-10pm Coronet Bay Hall
Ann 5678 0341

**Phillip Island & District Railway
Modellers Inc.**
The Phillip Island & District Railway
Contact Peter 5956 9513

St Georges Anglican Church Corinella
1st Sunday each month 11.00am
Other Sundays 9am
Free Community Lunch Corinella
Community Centre Second Friday
Op Shop open Mon, Thur, Fri 10am - 2pm
Saturday 9am- 12.30pm

**Country Women's Association of Vic inc.
Bass Group.**
Coronet Bay Margot 0409 559 047
Cowes Lorraine 5952 2165
Glen Alvie Libby 5678 3280
Grantville Annie 5678 8037

**Phillip Island Community and Learning
Centre (PICAL)**
56-58 Church Street, Cowes

Tenby Point Residents Association
President Jean Coffey 0419 500 593
Secretary David Pearce 0401 514 339

Around the Markets & Op Shops

MARKETS

Every Sunday
Kongwak
Market
10am - 3pm

Retro stalls, food, vegetables, coffee, curries
 30+ stalls

Enquiries: Jane 0408 619 182

1st Saturday

Archies Creek Indoor Market

Community Hall

Enquiries: info@archiescreek.com

2nd Saturday

Coal Creek Farmers' Market

Coal Creek Community Park 8am - 12.30pm

50+ stalls

coalcreekfm@hotmail.com

Contact for information 0459 629 000

Cowes Island Craft Market

102 Thompson Avenue, 9am - 2pm

In the grounds of St Phillips Church

60+ stalls Make, bake and grown goods and produce.

Contact for further details 0412 710 276

4th Saturday

Churchill Island Farmers' Market

40+ stalls. 8am - 1pm

peter@rfm.net.au

Further Information 0439 364 760

Cowes Market on Chapel

Chapel Street. 8.30am - 2pm, 30+ stalls

Further information-contact 0428 603 043

1st Sunday

Jumbunna Bush Market

Jumbunna Hall

Further information, phone 5657 3253

2nd Sunday

Koowee Community Market

Cochrane Park, Rossiter Rd 8am - 1.30pm

Indoor/outdoor Phone 0418 289 847

Email: info@kooweemarket.com.au

Rotary Club Market Wonthaggi

Apex Park 8am - 1pm, 50+ stalls

Walk to nearby Make it - Bake it Market

Contact: Neville Goodwin 5672 7245

Garry Sherrick 5672 5812

Loch Lions Village Market

May - Sept Loch Public Hall

Oct - April Loch Railway Station Park

70 + stalls

Information from Noel Gregg 5627 5576

Market day phone 0418 500 520

Community Markets



3rd Sunday

Inverloch Farmers Market

The Glade, Esplanade, 8am - 1pm

50+ stalls

Information: peter@rfm.net.au

Phone 0439 364 760

Tooradin Sunday Market

9am - 1pm

Stallholders wanted, \$20 includes 1 sausage

& bread breakfast per stall.

All Market Enquiries: 0429 188 280

4th Sunday (Weather Permitting)

Grantville Variety Market

Grantville Recreation Reserve

Cancelled until September

Except December which is the third Sunday.

8am—2pm 100+ stalls

BBQ & Sausage sizzle, Coffee Cart, indoor and outdoor, cake stalls plus plenty of home made goodies.

Contact for further details 5997 6221

Last Sunday of each month

Inverloch Community Farmers' Market

The Glade, Esplanade, 50+ stalls

Fresh produce grown and made in

Gippsland.

Email:

info@inverlochfarmersmarket.com.au

Phone 0417 370 488

2nd Friday and Saturday each month

San Remo Cuppa and Chat Market

St. Augustine's Church

Marine Parade San Remo

Hosts a Cuppa and Chat Market every month on a Friday and Saturday.

Friday 9am - 1pm

Saturday 9am - 12noon

10+ stalls

Bric a brac, cakes, & jams Friday, plus a sausage sizzle on Saturdays.

Further Information: 5678 5386

OP SHOPS

Bass

Bass Valley Community Group

Hadden House Op Shop

Next to Bass Hall, Bass

School Road

Monday to Friday 9am - 3pm

Saturday 10am - 2pm

Phone Enquiries 5678 2277



Corinella

St George's Anglican Church Op Shop

Smythe Street Corinella, next to Church

Monday, Wednesday, Thursday, Friday

10am - 2.00pm

Saturday 9.30am - 12.30pm

Grantville

Bass Coast Community Baptist Church

Op Shop

Bass Highway, Grantville

Open Monday - Friday 10am - 3pm

Saturday 10am - 1.30pm

Phone 5678 8625

Bass Valley Lions Club Op Shop

Situated at the Grantville Garden Supplies

Open Monday-Saturday 5678 8357

Lang Lang

Lang Lang Community Op Shop

12 Westernport Road

Monday - Friday 10am - 3pm

Saturday 10am - 1pm

Nyora

Nyora Op Shop at the Nyora Station

Open Monday - Saturday 9am - 1pm.

Enquiries to Sylvia, Phone 5659 0089

San Remo

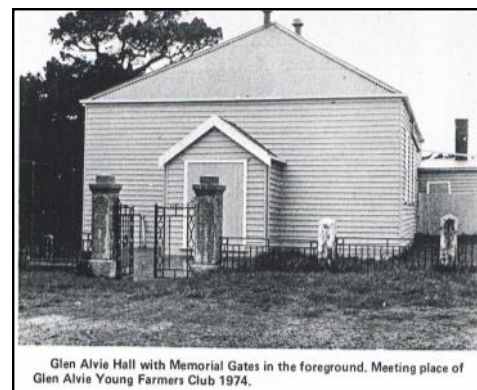
San Remo Op Shop

Back Beach Road.

Enquiries 5671 9200

Email: info@basscoasthealth.org.au

Community Halls for Hire



Glen Alvie Hall with Memorial Gates in the foreground. Meeting place of Glen Alvie Young Farmers Club 1974.

Archies Creek Mez Oldham 0415 445 215

Bass Valley 5678 2277

Corinella Paula Clarke 0418 441 046

Coronet Bay Peter Thick 0429 851 004

Dalyston Dorothy Slade 5678 7334

Grantville Pat Van 5997 6221

Kernot Julie Johnston 5678 8555

Kongwak Betty Anderson 5657 4317

Loch Grieg Barry 0419 358 628

Kilcunda Marion 0404 135 434

Nyora Robyn 5659 0098

Newhaven Noel Street, 5956 6122

Rhyll Ring General Store, 5956 9205

Woodleigh Evan Jones 5657 7275

Details not right?

Let us know....

editor@waterlinenews.com.au

If your community group is not listed in our community Directories, please let us know

Community Centre News



Who are we?

Wonthaggi Neighbourhood Centre incorporating Mitchell House and the Harvest Centre is run by a community based Committee of Management.

We aim to provide a positive, welcoming environment where you can meet new friends, learn or share skills, ideas and information.

If you're interested in being more involved in your Neighbourhood Centre call in and have a chat to the Coordinator Jan Bourne. Call: 5672 3731

New Fee charges to Learn Share and Family Membership Benefits: Do two Learn Share activities in any one week and get the third or subsequent L/S in that week free. A Family Membership now entitles all members of a family group to attend for the single cost of \$4 (unless activity includes material costs).

Here are some events happening this issue:

My Gov - How to Create Your Own Account is on Wednesdays 16th August and 6th September from 11am - 12noon.

Learn what myGov is and how it can benefit you. Please ring 5672 3731 to book and know what to bring to set up an account.

LGBTI Social/Support Group meet on Mondays, this term they are 21st August & 18th September from

7.00 - 8.30pm for an informal, safe and relaxed space to share experiences, friendship coffee and good conversation. Please call Jan for more information.

Winter 'Pop Up' Lunch is on Wednesdays 23rd August & 13th September from 12.30 - 1.30pm. Join us for a delicious lunch featuring produce from our community garden.

'Welcome to Our Town' Morning Tea is happening on Wednesday 23rd August from 10.30am. Are you new to Wonthaggi and would like to know about the area, town and WNC? Come along and share a cuppa and pick up your FREE 'Welcome to Our Town' DVD and pack.

Fermented Vegetables is on Thursday 24th August from 10.30am - 12noon. They add zing and zest to meals and also have many associated health benefits. Come and learn how to make your own. Recipes are provided. Book early.

Introduction to 'Sustaining Your Family on Less' is on Saturday 26th August from 9.30 - 11.30am. Hear about the practical and financial benefits of healthy homemade meals, reducing waste, budgeting and shopping with purpose. There are recipes and resources to take home. BYO 3 small

jars for hummus. Booking is essential.

Wet Felting: Create a Unique Purse is on Wednesday 30th August from 10.00am - 12.30pm. Learn how to create a beautiful handmade purse. All materials are included. Please book.

Speed Crafting is on Saturday 2nd September from 10.00am - 1.00pm. This is a fun way to learn about new craft skills or refresh old arts and crafts talents while enjoying a Devonshire Tea.

Spring Garden Celebration is on Wednesday 6th September from 10.30am. Join members of the Harvest Garden Group for a lovely morning of planting information, gardening tips and a tour of the garden coupled with morning tea.

How to make Goats Milk Soap is on Saturday 9th September from 10.30am - 12noon. Watch how to make this lovely goats milk soap. It is pure, silky and beautifully gentle on the skin and can be fragranced with essential oils.

Vegan 'Pot Luck' Picnic is on Saturday 9th September from 11.00am - 12.30pm. Come and learn all about the Vegan lifestyle and diet. BYO plant based food and juice and any recipes to share. Visit the Veggie Produce Swap beforehand then picnic at Apex Park or in Mitchell House if it's a bit cool.

Seed & Veggie/Produce Swap happens on the second Saturday of the month from 9.30 - 11.30am and this term the dates are 12th August & 9th September. Bring your excess produce to swap. It's on at the Harvest Centre.

Groups:

Free Friday Supported Playgroup is for families with a Health Care Card (or equivalent). Each week Janine our Early Childhood Facilitator will provide fun activities for you and your child to enjoy together. It is from 10am - 12noon. Call Janine on 0457 834 960.

Movement for Health is on Monday 21st August from 1 - 2pm and is a weekly event. Learn how to relax and meditate using this gentle practise technique with Marion Bowes. Wear comfortable clothing and if possible bring a mat.

Tea & Tots Facilitated Play Group is on Monday 21st 10.30am - 12noon. This is a fun new weekly play group which includes story time with a special guest reader, free play and a healthy morning tea. Call to book.

Courses:

How to Talk to Your Guardian Angels - 5 Week Course. This course starts on the 29th August. The sessions are from 7.00 - 8.30pm. Pip Coleman believes everyone has a guardian angel - even if you don't know it.

Call Pip on 0437 670 820 to enrol in her informative course.

There are many other courses and events

available, find out by visiting our Facebook page on Mitchell House Wonthaggi Neighbourhood Centre and keep up to date with what's going on or just pop in and have a cuppa and a chat, everyone welcome.

L2P
LEARNER DRIVER MENTOR PROGRAM

Making a Difference in the Lives of Young Victorians

The L2P program helps 16 - 21 year olds achieve the 120 hours of learner driving experience required to obtain a P-plate licence.

If you have a Learner's permit but do not have access to a supervisor driver or a vehicle due to financial or family circumstances, you are eligible to participate in the program.

You will have access to limited professional driving lessons and be supervised by a VicRoads trained volunteer/mentor to help you obtain your 120

Coordinator - Leanne Tilley.
Mon - Wed each week at the Community Centre.
Call 5672 3731 or mobile 0467 590 679.

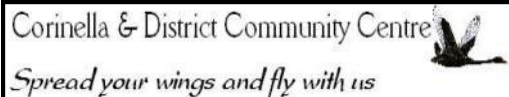
Bass Valley Computers



All computer repairs to Apple and Pc including service repairs to main boards and screen
No fix no charge
Now in South Dudley

(03) 5678 8715

Email bvc@dcsl.net.au



What's happening at your local community centre?

We have activities and groups running every day; our term 3 program is completed and can be viewed on our webpage at: www.corinellacommunitycentre.org.au.

Want to get back into the workforce or go onto further study? Brush up on your computer skills or further develop your skills, we have the Pre-Accredited Course for you. During winter 2017 we will be running a basic computer course: Intel® Learn Easy Steps program. Call us for further information on 5678 0777.

Want to learn how to create beautiful mosaics? We have an enthusiastic group that meets every Monday afternoon at 4.00 PM where you can work on your own masterpieces amongst likeminded people. Also on Monday and Wednesday evenings our local Yoga guru, Nikki runs the very popular yoga classes. Join John Adam local talented artist every Tuesday afternoon for art classes. Get support and help from John to develop your techniques and skills.

The Crafties meet every second and fourth Wednesday of the month, bring along your crafts that you are working on or have not had the time to finish and join a bunch of fellow Crafties for a fun morning out. Every Thursday, local artist Keith facilitates an art group where you can work on your paintings and get some tips from Keith. Introducing a new service,

Our local Justice of the Peace, Libby will be available at the centre each Thursday 10.30—12.00 for witnessing docs, declarations etc. Call to make an appointment with Libby.

Every Thursday at 12.00 pm, we run the **'Winter Days Social Lunch.'** Everybody's welcome to enjoy a light lunch whilst having a 'chinwag' with others, cost is by donation. Book club is a great group that runs on the second Thursday evening of every month.

Join Libby and the group to discuss or debate the book of the month. The lovely women of the St Georges Church Auxiliary host a delicious three-course community lunch on the second Friday of the month.

The food pantry is open every day to support people to put food on their table. This free service is designed to provide enough food in emergencies to get through a 24-hour period. We have a range of pantry goods, fresh fruit and vegetables. Fresh fruit and vegetables are generously donated every week by our friends, the Riccardi family at La Provincia in Corinella.

Drop in to have a browse of our free book exchange, grab a book, swap a book or donate a book, up to you.

CDCC run regular small bus trips to city markets, theatre shows, hot springs etc., call us to register your interest and enjoy a day out without the hassle of driving.

We have created the 'West Wall Gallery' in the foyer of the centre and are hosting monthly exhibitions of local artists. All of the exhibiting artists are living in the district, support your locals by dropping by and maybe purchase their work.

Do you need a small bus to get to events? We hire out the Waterline Community Bus (9 seater) at very reasonable rates.

Call us to check availability and prices.

We are always on the lookout for new volunteers, do you have a spare day a week? If so give Iain a call and come and join the team.

Volunteer roles are mostly in office administration but if you have special skills do call in and have a chat.

Keep up to date with us on Facebook @CorinellaCommunityCentre. Call in or call us on 5678 0777.

Cheers Iain

The Bass Valley Community Group Committee of Governance no longer wish to have their activities published in The Waterline News



0473 077 125



Phillip Island Community and Learning Centre



**56-58 Church St, Cowes
Centre Manager - Linda Morrison
5952 1131**

**Email :
admin@pical.org.au
Website:**

LANG LANG COMMUNITY CENTRE



Public Internet Access to all members.

IPad Tuition

Lifestyle classes including:

Yoga, Pilates, Cardio, Walking group and Line Dancing, Tai Chi.

Playgroup and Hey Dee Ho for the littlies.

A variety of Patchwork groups.

Men's Shed Group.

Secretarial Support Services including: Photocopying, typing and scanning.

Book Exchange

Small offices for hire

Centrelink Agent with dedicated computer.

Medicare Claim Service

Term 3 we have a few new activities and services to offer our local community:

- Tax Help by appointment only August-October
- NILS- No Interest Loan Scheme, provides small loans for eligible (fit the criteria) with no interest or fees. By appt only.

MEDITATION WORKSHOPS

August 10, 17, 24 & 31

Times 1.00 – 2.15

Bookings essential 59975704

Daffodil Day

Friday 25 August

Join us for morning tea at courtyard garden at 10.45.

Daffodil Day gives hope for a brighter, cancer-free future through raising funds for cancer research, prevention and support.

Bring a plate of morning tea to share and your donation.

Enjoy friendship and a few fun games



Cooking Workshops for men over 50 with Chef Barry Commencing Thursday 7 September at 12.30

These workshops are designed for all men, but in particular men who are living on their own may benefit from learning a few new cooking skills in a relaxed and friendly environment guided by a Chef.

For bookings & enquiries (59975704

**For further details on all events
Please call us, we open @ 9.30am five days a week.**

7 Westernport Rd, Lang Lang 3984

**Contact Coordinators
Michelle or Marg
(03) 5997 5704**

More Community News



CFA NEWS
With
Michele Fulwell

One of the great privileges of being a CFA member is the opportunity to give back to our community in unexpected ways.

A wonderful example of this happened a few weeks ago when Bass, Corinella and Kernot-Grantville Fire Brigades were lucky enough to join with Ambulance Victoria, SES and Lightning McQueen and spend some time with kids from Camp Quality at 'The Lodge' in Grantville.

All the children at camp received show bags and CFA beanies. The beanies were funded by the Grantville and District Bendigo Community Bank Branch and Brothers Keepers Motorcycle Club, a social motorcycle club for firefighters. Andy Stewart of Bass Fire Brigade summed up the feelings of those members who attended beautifully.

"We had a great time showing the kids the fire trucks: letting them don our helmets, talk on the radios and blast the sirens. All in all it was an hilariously funny and immensely inspiring morning had by all.

To the kids: all of us at the Bass CFA would just like to say how inspired we were by your positive outlook and incredible bravery in the face of illness. Though it was us in uniform being described as 'heroes' that day, none of us were comfortable with that tag in the face of your real-life courage and bravery.

You were the heroes that day - no question. We can only speculate that we might possess the same courage as you. Look forward to seeing you all again soon, we hope.

All the best from Bass CFA, and thanks for including us in your weekend away!"



<http://www.cfa.vic.gov.au/>



Are you passionate about creating change in your community, but don't know where to start?

People living with mental health issues and disability unfairly face stigma, discrimination and social exclusion. Most of us want our communities to be more connected and inclusive, but don't know where to start.

Join our Community Advocacy Forum to meet other change makers and access information, resources and strategies to get you started making a positive change in your community.

This event is open to anyone who is interested in building a positive future for people living with mental health and disability issue

Date:
Thursday, 24 August 2017
Time:
Registration from 10am
Forum from 10.30am to 3:30pm
Location:
Wonthaggi Workmen's Club
65-75 Graham Street
Wonthaggi, Vic 3995

Register:
<https://www.eventbrite.com.au/e/wonthaggi-advocacy-forum-tickets-35588013707>

Bookings are essential as places are strictly limited.
For more information phone Rachael or Cassy on 1300 111 400 or email advocacy@wellways.org



wellways.org



Pictured from left: Jett Williams, Michael Ventura and Jordan Sprie.



Michael Ventura a resident at KRHS enjoyed a day out cheering the Koo Wee Rup under 13's win against Endeavour Hills by 19 points last Sunday. He loved going out onto the oval at half time to hear the coach and the hot chips and coffee weren't bad either

Home Care Support

KRHS can help you every step of the way. Our experienced Care Advisors will give you the support you need and help you live as independently as possible in your own home.



We are committed to help you obtain high quality, reliable care, with flexible times that suit you, 7 days a week.

KRHS is government approved to provide home care
Packages call: 5997 9686

KRHS is a 72 bed Public Hospital.

We provide a range of community and centre based services: Acute Care, Early Parenting, Transitional Care, Respite and Residential Aged Care, Community Health, District Nurses, Home Care Support, Pathology and Allied Health e.g. Physiotherapy, Social work and Occupational Therapy.

There is also Specialist Medical Services: Podiatry, Cardiology and a Diabetes Clinic. KRHS is a member of the International Health Promoting Hospitals Network and Global Green and Healthy Hospitals.

235 Rossiter Road, Koo Wee Rup
ph: 03 5997 9679
email: gregorys@krhs.net.au
website: www.kooweeruphospital.net.au



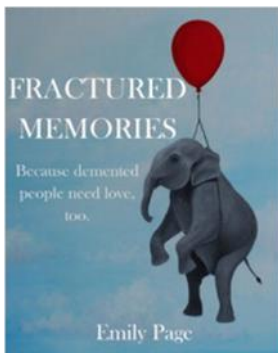
Health

DEMENTIA

Dr Rachel Wonderlin

We aren't talking enough about FTD I'm currently reading a book that Emily Page sent me.

She's an artist and new author of "Fractured Memories," a story about her father, a man who lost his life to Frontotemporal Dementia, or FTD.



Emily's book is true-to-life, honest, sad, and funny. I'm not finished with it yet, but wanted to share it with my readers. FTD is a really challenging form of dementia for a number of

reasons: one, it's pretty rare, so it's hard to find others that may have loved ones battling FTD. Secondly, it often affects people who are between the ages of 40 and 60. And, perhaps most notably, the most common variant of FTD is BvFTD, or "Behavioral Variant Frontotemporal Dementia." BvFTD completely changes a loved one's behavior patterns. It often makes them more impulsive, harder to communicate with, moody, and irritable. While other dementias also affect peoples' moods, this one does it almost immediately.



A painting from Fractured Memories

Emily opens her book with a chapter about her father's life. You can tell immediately this is going to be a tear-jerker, but in the best way possible. She's funny and down-to-earth, which I appreciate in a book about real life. She includes a lot of her drawings and paintings throughout the chapters, which is also a cool addition to the book.

Emily spent a few days with her father while her mother was visiting her own mom. Of one incident, Emily says,

"I went downstairs to put something in the deep freezer, and by the time I got back up, Dad had taken two frozen chicken breasts and plopped them on a frying-pan on high heat to cook them for our dinner that was supposed to be around 6 PM. Aaaaand, dinner was now ruined. It's amazing how

much trouble one man can get into in only twenty-three seconds...I began to see what mom was facing on a daily basis. She had not been exaggerating."

You see her father's struggle (and, subsequently, her family's struggle) with FTD in real-time.

I definitely recommend this book to anyone with a loved one with dementia. (It doesn't have to be a diagnosis of FTD to make sense to you

About the book: In 2009, Emily Page's father was diagnosed at the age of 65 with frontotemporal dementia, a form of dementia that strikes earlier and progresses more quickly than Alzheimer's, and for which there is no treatment to slow the progression of the disease. Being so young, Page hadn't had much experience with dementia, but she began documenting, in writing and art, her family's heartbreaking and hilarious experiences.

As a professional artist, she had often turned to art as a self-prescribed therapy to help deal with life's trials. This battle was no different. She utilized the elephant as a symbol for dementia, and incorporated sheet music into the paintings because her dad had been a jazz musician. Eventually, Page created 40 paintings that are included in the book. She also began blogging about the range of issues that arose daily as the disease progressed, documenting everything from her own fear of getting dementia, to her dad's transition to diapers (and the various places he opted to drop his drawers and just "go"), to combatting his compulsions like the need to "clean" the cars with steel wool, to an exploration of how he might have gotten the disease, to finding the right dementia care facility, to the best ways to make him giggle. Page approached the disease from the fresh viewpoint of a younger caregiver. As her blog following grew, so did the suggestions from readers that she turn the blog into a book. After hearing too many horror stories about traditional publishing contracts, she decided to self-publish. She ran a fundraising campaign for her book, Fractured Memories, and presold over 500 copies in less than a month.

"My dad was my best friend. He embraced the ridiculous, looked for the good in people, and mentored and helped people whenever he could. Following his diagnosis, when people asked how he was doing, he'd answer, 'Not bad for a demented guy.' He looked for the light hiding amidst the pain. He chose to be very open about what he was going through in the hopes that it would help other people cope with their own diagnosis or a loved one's diagnosis. Writing this book seemed a fitting way to honor that legacy." Page doesn't shy away from the ugly, raw

emotion of life with dementia, but she also looks for the laughter where it can be found. Rest assured, you will love her father as much as she does when the book is done, and perhaps gain some insight about how to cope with your own loved one's dementia or how to support a caregiver.



Fractured Memories: Because Demented People Need Love, Too

EBook available at https://www.amazon.com.au/d/B06XG474B8/ref=sr_1_1?ie=UTF8&qid=1500000172&sr=8-



Grantville Medical Centre
2/1524 Bass Highway,
Grantville

For Appointments Call
(03) 5678 8029

Hours

Mon - Fri 9.00am - 4.30pm
(Wed closes at 1.00pm)
Closed over lunch period

Bulk Billing

All Pensioners, Health Care Card
Holders and children under 16 are
Bulk Billed.

www.wonthaggiemical.com.au



Treating Arthritis with Chinese Medicine

Arthritis most commonly occurs in two different forms. Osteoarthritis is the “wear and tear” type and is the slow degeneration of the cushioning cartilage in joints. The breakdown of this cartilage causes bones to rub against each other causing pain, stiffness and loss of movement. Rheumatoid arthritis is a chronic autoimmune disease where the immune system attacks the body, in this case the synovium or lining of the joints. This progressive condition causes inflammation, pain and swelling around the joint, loss of function and disability.

Chinese medicine primarily refers to arthritis as Bi Syndrome which means painful obstruction syndrome. It can have several causes and will be treated differently according to the symptoms presented. We view it as invasion of external pathogens such as wind, cold, heat and dampness. You will notice that these climatic factors will either exacerbate the condition or make it better. Unfortunately, these pathogens will cause blood and energy to stagnate in the joints which will cause pain.

Acupuncture and Chinese herbal medicine approaches the treatment of arthritis by removing those pathogens as much as possible. It may assist by improving local circulation, clearing or reducing inflammation and boosting the immune system. “One study showed that acupuncture was more beneficial, had better patient outcomes and fewer side effects than drugs in treating rheumatoid arthritis.” (reference available on request).

Acupuncture may be used in the local area or distant from the problem to relieve pain and invigorate circulation. Herbs may be used to nourish deficient conditions and expel those excess pathogens causing problems. Moxa is a herb that is burnt over an area where the skin can absorb the herb’s properties and warmth. This is excellent especially if cold is locked in a joint and needs to be moved. Additionally, diet and exercise are very important factors in

dealing with this condition and will be a part of your consultation. Whatever has led to the formation of this disease, Chinese medicine may be able to assist.

Book your appointment today: Call 5956 7011 or book online
www.safflowerclinic.com.au



Multi Function Power Grip
 This is ideal for people with arthritis or weak hands
 Item No: TG39
 \$9.90

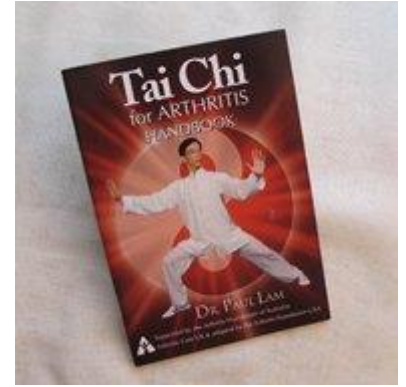


Sewing Needle Threader
 It’s the quick and easy way to thread a needle.
 Item No: AG66
 \$9.90

<http://www.aidsfordailyliving.com.au>

Tai Chi for Arthritis Handbook \$12.95

Dr Paul Lam



This handbook is designed to complement the Tai Chi for Arthritis DVD.

Dr Paul Lam, a family physician in Sydney, is a world leader in the field of tai chi for health improvement.



DG Nurse Practitioner
 Grantville Transaction Centre
 Cnr Bass Hwy & Pier Rd
 Grantville, 3984

Hours
 Mon, Tues, Thur, Fri 8:30 am - close
Bulk Billing

All consultations bulk billed
 May have fees for some procedures*

For appointments phone
 5616 2222

or
 0467 841 782

Same day appointments available

Some of the services available

- | | |
|--|----------------|
| Fluvax | Immunisations |
| Men’s Health | Prescriptions |
| Referrals | Skin Checks |
| Wound Care | Women’s health |
| Dressings* | Ear syringing* |
| Lesion removal* | Suturing* |
| Treatment minor illnesses / infections | |



HEALTH & WELLBEING COUNSELLOR
25 YEARS EXPERIENCE

HEALTH: Prevention – Natural Therapies – Specialising in Cancer Healing

COUNSELLING: Adults – Children – Workplace

INFRA-RED SAUNA: Detox Without Effort... More Energy – Better Sleep
 Clarity of Mind

REMEDIAL MASSAGE: Relieve Tension – Stress – Aches – Pains

Contact: Ella Hayes. Mob: 0407 814 049 (Corinella Area)

Email: elephant_ella@bigpond.com

& Lifestyle

TASTE TREAT

People who suffer with coeliac disease, or who are gluten intolerant usually get a pretty raw deal when it comes to food, but not any more.



Step into Kernot's Joanne Krog's kitchen and a whole new world of tasty treats will open up to you. Coeliac is where the body reacts abnormally to gluten and even a small amount can leave a sufferer with severe pain.

Joanne was diagnosed three years ago and after working for decades in the hospitality industry, she set about creating a successful recipe for gluten-free pastry that didn't taste like cardboard.

Many have tried before her, without success as anyone who is gluten intolerant will probably tell you, but Joanne is on a winner with hers, for sure.

Late last year, after perfecting the recipe, she decided to use it to create a range of gluten free pies, pasties, cakes and slices, that she and others could enjoy. She and husband, Tony, turned an old shed on their property at Kernot into a commercial kitchen and Jo Jo's Gluten Free Goodies was born.

Joanne's passion and dedication (not to mention hard work) ensures the food is of the highest standard and many of her customers believe it is the best gluten free food they've tasted.

Last month Joanne and Tony travelled to the Baking Association of Australia trade show, at Moonee Valley where they held Australia's Best Pie competition, as well as Australia's Best Pastie competition.

We are delighted to let you know that Jo Jo's Gluten Free Goodies won the Gluten-Free category for both Pie and Pasties. Jo Jo's Steak and Caramelised Onion Pie was the best pie, while the Roast Vegie Pastie took the top prize in that category. Joanne and Tony were delighted.



Joanne also makes gluten free bread and one customer at the Mornington Racecourse Market recently said "I don't think I have ever tasted bread this good. My non coeliac husband says it is indistinguishable from normal bread".



So if you are coeliac, or gluten intolerant, give Jo Jo's Gluten Free Goodies a try. They regularly visit markets at Berwick, Yarra Glen, Mornington and Lardner Park. If you want to know where they will be next, or want to pick up from her Kernot Kitchen, give Joanne a call, or send her an email.

Phone: 0404 605 086

Email: mammajo.jk@gmail.com



JO JO'S GLUTEN FREE GOODIES
mammajo.jk@gmail.com

my recovery

mental health education & support

"This program changed my life for the better. I connected with people. I found I wasn't alone, that there is so much support out there. It gave me a drive to keep moving forward in my recovery."
- Program participant

- L **Date & session time:**
Tuesdays & Wednesdays each week
- From: 22nd August To: 20th September
- 🏠 **Location:**
Wilson's Promontory Motel
26 Station Road
Foster
- 💰 **Cost:**
\$30 (Centrepay Available)
- i **To register:**
Call the Gippsland Office on:
(03) 5622 4100
Email: Gippsland@wellways.org

wellways
mental health | disability | rehabilitation

Australian Gluten-Free Life magazine

<https://www.isubscribe.com.au>

Community Acupuncture

safflower
Chinese Medicine Dispensary & Clinic

More choices naturally!

Community acupuncture takes place in a shared space where several patients are treated at the same time. It's a drop in service which means that after your initial consultation, you won't have to make an appointment. See our website for more information.

10 Bluebird Court, Newhaven
Phone: 03 5956 7011

reception@safflowerclinic.com.au
www.safflowerclinic.com.au

Nici Marshall
MASSAGE THERAPIST

*Relaxation *Therapeutic *Deep Soft Tissue
*Myofascial Release *Sports Massage *Myofascial Cupping
*Pregnancy Massage *Manual Lymphatic Drainage

facebook.com/nicimarshall
0488 665 051
5/39-41 Panorama Drive
San Remo 3925
nicit1968@hotmail.com
Member of AAMT



PHILLIP ISLAND JAZZ CLUB
Bass Room, Ramada Resort, Cowes

SUNDAY 19 August 2pm - 5pm
Next Gen.

Sunday 17 September
Andy Scott Quintet



Andy Scott has spent the last few years with CW Stoneking playing on his current album *Gon' Boogaloo* with over 100 sold out shows including 42 shows in 52 days all over Europe and UK, a week-long tour of Brazil, tour of New Zealand, various gigs in all Australian capital cities as well as many of the big festivals like *Splendor in the Grass*, *The Falls Festival*, *Marion Bay*, *Melbourne Zoo Twilights* and *Sydney Zoo Twilights*

Now has his own Swing band playing bass and singing the **Andy Scott Quintet**. He has also has formed R'n'B band **GAP** with drummer/vocalist **Gary Young**

Steve Temple has been part of the Melbourne music scene since moving from Queensland in 1999. He plays a diverse range of styles including jazz, swing, R&B, soul/funk, Gypsy jazz, country and western swing.

Gary Young is a singer, song writer and multi-instrumentalist who plays drums, piano and guitar and has played in some of Australia's favourite bands including *Daddy Cool*.

Jo Abbott is a Melbourne based pianist and accordionist with over 20 years of performance experience nationally and internationally. Jo currently performs French musette with local bands such as 'Django Rhythm' and 'Belle Musette', and has been pianist with Melbourne's "Downbeat Big Band" since 2006.

Guitarist **Sam Lemann** moved to Melbourne in 1990 following a tour with the Perth based band *The Jam Tarts*. Prior to this he

won the 1983 National Guitar Competition at Tamworth at the age of 16 and led a busy musical life. After moving to Melbourne Sam became a regular member of *The Moovin' and Groovin' Orchestra*, *Andy Baylor's Cajun Combo* and *Gypsy Swing*. He is also an intermittent member of many ensembles such as *The Swinging Sidewalks*, *The Romana Geerman Trio*, and *Uncle Bill*. He has also appeared on over 40 CDs!

Andy Scott	Bass and Vocals
Jo Abbott	Piano and Vocals
Steve Temple	Trumpet, Valve Trombone and Vocals
Gary Young	Drums and Vocals
Sam Lemann	Guitar

For more information please contact
Robin Blackman on 0432 814 407

MOE - LATROBE JAZZ CLUB



Sunday 27 August - Wonderdogs
Sunday 24 September - Moonee Valley JB
Sunday 27 October - Dixie Dazzlers

Contact:
President Bruce Lawn - 5174 3516

SOUTH GIPPSLAND JAZZ SOCIETY
Inverloch Jazz Club



Sunday 10 September
2.00 - 4.30pm
Anita Harris & Friends

Enquiries: Neville Drummond 5674 2166

Saturday August 6
Coronet Bay Hall
7 - 11pm



Coronet Bay UNPLUGGED continues to attract good audiences every 1st. Saturday of the month at 7pm. at the *Coronet Bay Hall*, *Gellibrand Street*.

No matter what style of music you like there will be something to your taste. You can bounce along to rock or shed a tear with heart rending folk, or just have the troubles of the day flow away with beautiful classical music and poetry.

Truly the best value entertainment around, it's just a gold coin to enter and supper is provided.



KERNOT FOOD & WINE STORE



Friday & Saturday nights, Sunday afternoons .

Live music at The Kernot Store.
For details on who is performing and to book a table:
Call Julie on 5678 8555

PHILLIP ISLAND JAZZ proudly presents an afternoon of outstanding 20's JAZZ

Andrew Nolte Orchestra
SUNDAY 15th October
2 - 5pm
BASS ROOM.

For Further Information including lunch & show packages or group bookings contact Robin - 0432 814 407 or Jill 0417 416 300 or go to

Community Bank Branches

The Jazz Club - 12-2pm Saturdays.

3mFM
 88.1 89.1 89.5
 Local Radio

Are you having difficulty tuning in to 103.1 3BBRFM?

Your Radio 103.1 3BBRFM **Your Voice**

West Gippsland Community Radio Inc.

You can now hear your favourite programs through our streaming service.

Find the link at: www.3bbrfm.org.au

2017 PHILLIP ISLAND JAZZ FESTIVAL



OPENING NIGHT
\$90.00 per head includes 3 course meal, complimentary bottle of red and white wine per table.
 Entertainment from Juliarna & The Heartjazz Band and Bruce Gourlay

APPEARING WILL BE:
Juliarna & the Heartjazz Band
Bruce Gourlay
Royal Garden Jazz Band
Simontologists
The Blue Two Few
Hot B Hines
Steve Waddell's Creole Bells Revival Band
Beverly Sheehan
Shirazz
Georgia Brooks Swingtet

SUNDAY EVENING - 19TH NOVEMBER
 Subject to sufficient interest we will be turning Number's Restaurant at Ramada into a Piano Bar featuring Bruce Gourlay. A wide range of quality canapes and finger food will be available at the reasonable cost of \$15.00 per head. For those interested in something a little more substantial the A La Carte menu will be available.



TICKETS ON SALE
1st AUGUST

Phillip Island Jazz Club Members
\$70.00 ea.
Early Bird Tickets
 Season Tickets if purchased prior to 30th August. **\$75.00** ea.
 Season Tickets if purchased prior to 30th September. **\$80.00** ea.
 Season Tickets if purchased after 30th September. **\$85.00** ea.
 Saturday **\$50.00** ea.
 Sunday **\$40.00** ea.
 Concession (Sunday only) **\$35.00** ea.

Individual Day Tickets will go on sale on the 31st October subject to availability of space.

Purchase your tickets early to avoid disappointment
TICKETS ARE ONLY AVAILABLE FROM PHILLIP ISLAND JAZZ



Steve Waddell's Creole Bells Revival Band and Beverly Sheehan



CHICAGO ready to wow!

Imagine the most glamorous Art Deco set, laden with talented women in scandalously stunning costumes, a bold and brassy band, fantastic choreography, and a soundtrack that has your feet tapping and eyes shining, this is what audiences can expect from Wonthaggi Theatrical Group's upcoming production of Chicago.



Set in 1920s Chicago, Chicago takes its audience on a vaudeville tour of Velma Kelly and Roxie Hart's criminal trials. Both women are accused of murder and, with the help of criminal lawyer Billy Flynn, learn to use the media to manipulate their way out of jail and into stardom.

The cast and crew have been working tirelessly over a short and intense eight-week rehearsal period. Blessed with an experienced cast who have been diligent in learning lines and steps, and a skilled creative team, Director Karen Milkins-Hendry is thrilled with their progress.

I am so excited to share this show with the community; I really hope people come out to see it. It's a real crowd pleaser – full of humor, wit, dancing and action," Milkins-Hendry said. "You don't have to be a musical theatre buff to be entertained by Chicago because it has something that appeals to everyone."

Chicago will be on stage at the Wonthaggi Union Community Arts Centre from Saturday 19 August to Saturday 2 September.

You can purchase tickets at

www.wtg.org

Newhaven College Reunions



Many founding students, staff and families attended the Early Years Reunion at Newhaven College's Boys Home Road Campus in January this year and now the final reunion to be held at Boys Home Road is scheduled for Saturday 14 October prior to the campus closing at the end of the school year.

The classes of 1987, 1997, 2007 and 2012 and their families are invited to return to Newhaven College for their respective 30, 20, 10 and 5 year reunions. Students from those cohorts who left before Year 12 are also invited to attend.

An afternoon tea will be held at 3.00pm in the Auditorium of the Boys Home Road campus on Saturday 14 October, followed by an optional tour of the Phillip Island Road Campus where the new Senior Learning Centre and Art, Science and Technology wing will be nearing completion.

Some alumni are also organising a dinner in the evening for their year level, so to be invited to those events, please RSVP at <http://www.newhavencol.vic.edu.au/about/events>

As 2017 is the last year for the Boys Home Road Campus, an open invitation is extended to all past Newhaven College students and their families to attend this reunion to farewell their school.

We hope to reach as many alumni as possible so please share this news with your networks via the website event and also at www.facebook.com/newhavencollege

For enquiries, contact **Kelly Fuery** 5956 7505.



We are here to help you.
When quality counts.

									
PETER BUITENHUIS Chief Executive Officer 0407 045 525	MIKE FOENANDER Executive Residential & Commercial Sales Manager 0408 547 677	JENNI KENT Sales Property Consultant 0428 566 643	MARC COULTE Sales Property Consultant 0477 045 744	BETH LYNCH Sales Property Consultant 0402 518 313	JOSH DUNSTAN Residential & Rural Sales Consultant 0407 558 933	GREG DAVIS Sales Property Consultant 0488 279 740	SARAH FOSTER Sales Support 5952 5100	MELISSA STEINER Sales Support/Reception 5952 5100	CAMILLE MORRIS Marketing & Business Development Manager/IT 0417 181 961

Sales **59525100**
54 Thompson Avenue, Cowes Vic 3922

Judith Wright & Leggo

real estate

www.phillipisland.com.au

Welcome®

Food

A COOK'S JOURNAL



For Jan Cheshire, good cooking starts in the garden with fresh, seasonal vegetables, herbs and fruit. Jan shares food tips and some of her favourite recipes.

Fish dish a breeze



We Love to eat fish, however we don't get much variety in the supermarkets around this area, so I try to cook a few different fish dishes from time to time. This is one

of the best fish pies that I have ever made and is a very easy and economical recipe.

COCONUT FISH PIE

Ingredients

- 400ml can of coconut milk or cream
- juice and zest of 1 lemon
- 1 bay leaf
- 500 grams of fish such as blue grenadier chopped into chunks
- splash of white wine (optional)
- 350 grams of celeriac peeled and diced
- 2 medium potatoes, peeled and diced
- thyme
- parsley and chives (optional)

Method

Gently poach the fish in the coconut milk together with the lemon juice and zest, parsley and chives, if using, and a splash of olive oil for 5 to 8 minutes.

Cook the celeriac together with the thyme and potatoes for 20 minutes until soft.

Drain and mash together with a little butter, season.

Put the fish in a baking dish, pour over the poaching liquid.

Top with the mashed celeriac and potatoes.

Bake at 180 degrees for 30 to 40 minutes until golden on top.

Rhubarb with the lot



NOT only did we have a great crop of apples this year but the rhubarb has been wonderful as well. In fact, we have had

to remove some of our older plants to make room for other things! As you can imagine, I've been making rhubarb crumbles, tarts and cakes, etc. We really enjoyed these sweet muffins and the raspberries give them a bit of oomph. They're very easy to prepare and freeze well. These make a nice little treat for morning tea.

RHUBARB & BERRY MUFFINS

Ingredients

- 1½ cups of self-raising flour
- ½ teaspoon of ground cinnamon
- ½ cup of caster sugar
- 100 grams of melted butter (cooled)
- ½ cup of buttermilk (I use fresh milk and squeeze a couple of teaspoons of lemon juice in and let it sit for 10 minutes – this will turn out like buttermilk, or you can buy it at the supermarket.)
- 2 lightly beaten eggs
- 1 teaspoon of vanilla essence
- ½ cup of fresh or frozen raspberries
- 2 good sized sticks of rhubarb finely chopped

Method

Preheat the oven to 180°C

Grease and line a 12-hole muffin pan with muffin cases

Sift flour and 1/4 teaspoon cinnamon into a bowl.

Add the sugar and stir to mix.

Make a well in centre and add the butter, buttermilk, egg and vanilla.

Using a large metal spoon, stir gently to mix.

Fold through raspberries and rhubarb

Spoon the mixture into prepared muffin cases filling them about ¾ full

Mix 1 tablespoon of sugar and the remaining cinnamon in a bowl.

Sprinkle over the mixture Bake for 12 to 15 minutes or until a skewer inserted in centre of 1 cake comes out clean

Stand in pan for 5 minutes.

Transfer to a wire rack to cool.

Serve.

Jan Cheshire's recipes first appeared in the Bass Coast Post online.

<http://www.basscoastpost.com>



Kernot Food & Wine Store
Paul and Julie Johnston

Open

Thursday & Sunday 9.30am - 8.00pm

Friday-Saturday 9.00am - 10.00pm

Breakfast & Lunch Thursday to Sunday

Wood Fired Pizza Thursday to Sunday

Dinner Menu Friday & Saturday

[Winter opening times may differ]

Live Music Friday Night & Sunday Lunch



1075 Kernot-Loch Road
Kernot, Victoria 3979
03 56 788 555

kernotfoodandwinestore@gmail.com
facebook: Kernot Food and Wine Store

BASSINE SPECIALTY CHEESES

Bass River Dairies Whole Milk. 1 & 2lt.
Plus an exciting range of gourmet cheeses, made on the premises.

Café, Lunches, and yummy Ice Cream.

Now Open 7 days a week

Mon-Fri 10-4, Sat-Sun 10-6

Phone 0466 183 513

Bass Highway, Bass (Opposite King



Re opening after winter break on 1 September 7 days a week



**Terms & Conditions apply.

Cover tailored specifically for over-60s.
The best holidays come from peace of mind.
For more information call 1800 622 966



Our people - Tributes

VALE MAX NAYLOR



Norman (Max) Naylor 13.8.31 - 27.7.17

Popular Grantville identity, Max Naylor, passed away peacefully on 27 July, after a long illness. Loved partner of Clare Caughey, and father of Debbie and Leigh, Max was well known in the district for his commitment to the community and was about to receive his ten year service award from the Red Cross. With long time partner, Clare, Max was a regular at most Red Cross functions and he was also a long standing member of Probus. Clare and Max met for the first time on a Probus outing, to Tooradin, despite having lived in close proximity to each other, in Grantville for a number of years. Max was better known by some as the man who lived in the little wooden house on the hill, on Bass Highway, where the new quarry is now. He moved from there to a house in Smith Street, backing onto Clare's property on the highway.

Max was a master cabinet maker in his younger days and worked with most of the high end antique dealers in Malvern. He was a great family man, and memories of his carpentry skills, in building his own camper trailers, and campervans, were recalled by his son, Leigh, in a moving tribute at his funeral service, held at the Grantville Hall on 4 August, which, in a fitting tribute to Max, was a full house.



Max, pictured with daughter Debbie and son Leigh.

DEDICATED TO CARING



'Funerals are not a subject many give much thought to. For most of us - it's a need only basis.'

**Dianne Comber,
Lang Lang District
Funeral Service**

has been associated with funerals all of her life.

Her father, Edward (Ted) Bull from Somerville has been a funeral director for 57 years.

Dianne and her husband Robert (Bob) have lived in Lang Lang for more than thirteen years now.

They are both dedicated volunteer members of the C.E.R.T (Community Emergency Response Team). Trained by Ambulance Victoria, CERT volunteers are called when an ambulance is required. Living within the community, CERT members can be in attendance within five minutes. Members are then able to treat, stabilize the patient, ease their fears and make them more comfortable until an Ambulance is on the scene.

With her father having been associated with the funeral industry for 57 years and with a younger sister and brothers associated as well it is no surprise that Dianne decided to start her own funeral business Lang Lang District Funeral Service.

Working alongside her father over the years not only gave her experience in the business side, but also a deep compassion for the family and friends of those left to grieve, and a desire to help them through one of life's toughest experiences.

Dianne decided she wanted to be of service to the people around her local communities. Together Robert and Dianne have four children with ages ranging from 25 to 34, and are blessed to have four beautiful grandchildren.

Lang Lang District Funeral Service caters for Burials and Cremations, Pre-Paid Funerals, Pre-Arranged Funerals and provides local service by local people for local people which is a great family business motto.

Dianne and her team, husband Bob, Rosie Keane and driver, Brian Candy looked after Max's funeral and for many attending, it was their first experience of their outstanding service.

REMEMBER TAYETON?



Tayeton, at school with faithful companion, assistance dog, Jamie

Remember Tayeton Dammon?

Tayeton first appeared in The Waterline News in January 2015 after he, then three years old, appeared at Christmas in the Park in Grantville, with mum Danielle.

On Monday 24 July Tayeton received a well done award at Korumburra primary School. It read:

Tayeton Dammon in prep FS for being self-motivated and working diligently to create his own alphabet chart in investigations. Well done Tayeton.

Tayeton has worked so hard since starting school this year, with so many issues trying to the best of his abilities, he can not always see or hear what is happening around him and Tayeton struggles each day with writing and reading in his learning due to his vision and hearing impairments and has specialised equipment so he doesn't struggle as much as he would have without them.

School have been amazing with him, and Jamie, his Mobility Assistance dog has supported him so well at school and is by his side always.

Tayeton is doing really well with a few complications and is achieving so much already, I'm so very proud of my son.

Tayeton and Jamie they just amaze me so much, without Jamie Tayeton would not have had the confidence he has now with walking or schooling. Well done Tayeton. For further information:

Roger Clark <https://www.facebook.com/HelpTayeton/>

 **The Dog Whisperer**
Pets minded in your own home, Grantville & District.
Can visit twice a day if required., Gardens Watered
From \$20 per day, Reliable, Good references
Call Now 0403 025 429



Di Thomas Avon Representative
If you would like to order Avon,
or would like a brochure on a regular basis,
feel free to contact me.
Email dizat1@bigpond
Phone 0417 577 082

The French Island News



FRIENDS OF FRENCH ISLAND NATIONAL PARK (FOFI)
Secretary: Meredith Sherlock.
Phone 0438 077 329 Email: secretary@fofi.org.au



FOFI Project Days

Third Saturday each month - activity to be confirmed. The ferry departs from Stony Point at 10.00 am on Saturdays, and non-islanders usually catch the 4.00 pm ferry back to the mainland. If you plan to come on a project day, please contact the Secretary well in advance to give us time to organise transport on the island.

More details on: www.fofi.org.au

FRENCH ISLAND COMMUNITY ASSOCIATION

French Island Community Association
Tankerton PO
French Island
Victoria 3921
secretaryfica@gmail.com



EMERGENCY SERVICES

There is no regular police presence or ambulance service on the island. French Island has a Country Fire Authority (CFA).

There is one fire engine stationed permanently on the island, next to the Community Hall on Tankerton Rd. CFA volunteers are able to respond to any kind of emergency.

Calling 000 is always the best option in an emergency.

NURSE ON CALL

For non urgent health issues islanders may utilise the Department of Health's Nurse on Call service:

Nurse On Call 1300 60 60 24

AMBULANCE SERVICES

Ambulance Membership

Membership Enquiries 1300 366 141 (Mon-Fri 8am-8pm, Sat 9am-5pm). Membership is advised as Air Ambulance is used from the island. If local support is required ask Ambulance to request CFA support on the island.

FIRE PLAN

All bushland residents should have a personal fire plan.

The French Island CFA hosts annual information sessions which give concrete advice on this topic.

The CFA is also happy to visit individual properties to further aid in the development of fire plans.

As for all of Victoria, fire bans and other instructions issued by the CFA should be followed.

POISON INFORMATION HOTLINE 131126

French Island General Store and Post Office

From bread and milk to plumbing supplies, the store provides so many goods and services, we can't name them all here. In the meantime, whether it's distilled water for batteries or a fuel filter for the car, ring to find out what's in stock. Newspapers can also be ordered from the store with at least 24 hours notice.

**289 Tankerton Road,
French Island 3921
(03) 5980 1209**



FRENCH ISLAND FERRY

NEW FERRY SERVICE:

Western Port Ferries, a wholly owned subsidiary of Searoad Ferries, has been announced as the new operator between Stony Point, Tankerton and Cowes.

From 1 July until late September an interim service with the "Island Explorer" will run on the same timetable and fares as previously.

From late September a new, purpose built catamaran ferry will take over the route.

We are sorry to say goodbye to the crew on Inter Island Ferries, but hope that the new operator will be able to provide a more reliable service.

Note:

Tickets can now be booked online or purchased on board the vessel rather than at the Stony Point Kiosk.

Seniors Card holders continue to travel for free on weekends.

FOFI has a number of tickets to help pay for members under 60, generously provided by Parks Victoria.

For more information see:

<http://westernportferries.com.au/>

NO MORE PLASTIC BAGS

FIGS (French Island General Store) has announced that it will no longer be using plastic bags, and asks its customers to bring reusable bags to the store.

This is excellent news for our marine life. Well done!

Thank you

Snippets in this issue from FOFI News were compiled by Meredith Sherlock.

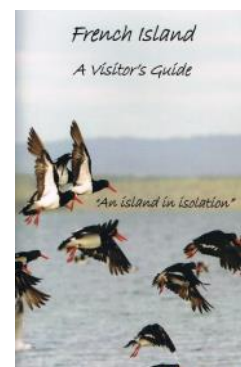
New French Island Visitor's Guide

Now available:

From the General Store

**Or Email the author
Christine Dineen**

dineenc@optusnet.com.au



Notices for the French Island section of The Waterline News should be sent to: editor@waterlinenews.com.au - 1st of month.

The French Island News

HAPPY ANNIVERSARY



Seems hard to believe that it is 12 months since the front cover of The Waterline News, August 2016, reported on the French Island General Store being “Under New Management”.

The French Island General Store celebrated its first birthday under new management in July with locals coming in to enjoy a birthday cake and celebrate. Under new management for the last 12 months, the Cafe and General Store has had a wonderful first year for the new

owners supported by the many locals and tourists.



A successful year, with additions for customers like a courtesy bus, which picks up visitors from the Tankerton Ferry and transports them to/from the cafe every weekend. Picnic tables, new bikes for hire and an accommodation makeover are a few of the other successful value-adds for visitors to the Island. French Island boasts national parks and nature based activities for tourists. The cafe makes everything from coffees to milkshakes, toasted sandwiches to sit down meals. In winter the fire roars and the

atmosphere is cosy and relaxed. Visitors can pick up a map, hire some bikes, buy some French Island wine and head out on a day of discovery. Walking tracks like the Pinnacles Walk and heading out to see koalas are some of the activities one can enjoy. Visitors can arrive by barge from Corinella or Ferry from Cowes or Stony Point and have a glimpse of an off the grid island with much yet to be discovered.



The free shuttle bus for Customers, to and from the store on Weekends and Public Holidays has been warmly welcomed.



figs Free Shuttle Bus for Customers to/from the Store
Weekends & Public Holidays Call: 03 5980 1209

French Island General Store & Cafe
289 Tankerton Rd French Island, Victoria

Bike Hire Souvenirs/Maps
Licensed Cafe Take-Away Food
Accommodation Dine-In Menu

Opening Hours
Monday-Friday 8am-5pm
Saturday-Sunday 9am-5pm
Public Holidays 9am-5pm

info@figsfrenchisland.com.au www.figsfrenchisland.com.au facebook/figsfrenchisland


French Island Community Tip

Working Bee Time: 10am - noon

Got a little spare time this year to help keep the tip tidy?
Here are this year's remaining dates.

August 14 September 11
October 9 November 13
December 11


BYO water, gloves, hat, mozzie repellent and sunscreen.
Contact: Linda on 0413 919 607



FOCUS on Lifestyle Fred Lodge

Factory 3, 17-19 The Concourse, Cowes, Vic, 3922
Ph: (03) 5952 3352 Fax: (03) 5952 3342
Mob: 0437 243 448
E-mail: focus@waterfront.net.au

Mobility Aids & Lifestyle Products



French Island Landcare



Landcare Ordinary Meetings
All Landcare members are welcome to attend.

For more information on any of these events, contact
filandcare@gmail.com.

Landcare Nursery
Volunteers are always
welcome at the nursery on



Wednesdays and Thursdays from 10am to noon.
Contact: filandcare@gmail.com.
Contact Terri:
0413 088 527

The French Island News

If you have any stories on the history of French Island you would like to share with our readers, send them to:
editor@waterlinenews.com.au



Catching up with some FOFI News from their last Newsletter, with thanks to Meredith Sherlock.



We are saddened to learn that the lease on Park Victoria's "Troopy" has expired and the vehicle leaving the island and not replaced.

The Troop carrier accommodated nine passengers (and their gear) and has taken FOFI all over the island for many years. We will still have ranger support and a standard Parks Victoria four-wheel drive, for which we are grateful, but will be dependant on the generosity of islanders for additional transport. More news on this situation as soon as it becomes available.

health issues, young age, or pregnancy. Koalas are moving into "hot spots" as these become available, allowing capture rates to remain high. The importance of the program is evident in the poor body condition of the koalas that have been moving in from non-preferred habitat.

A Spring program is planned.



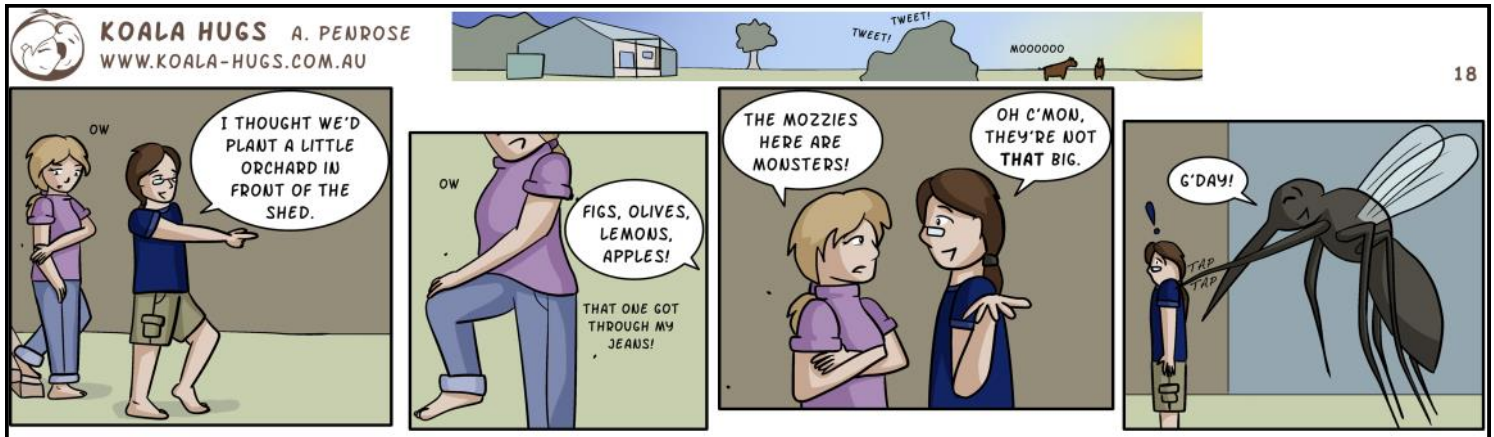
KOALA MANAGEMENT PROGRAM

At the end of the Autumn program, 993 koalas had been caught and health-checked. 723 of these were translocated: 435 to Kinglake National Park and 288 to Tallarook State Forest. All of the females have been implanted. 68 animals had to be euthanised because of poor health, while the remainder were returned to their capture site because of various

ARE YOU A MEMBER?

Membership of just \$10 per household per year is vital to our survival. Please see our website for how to join or renew.

www.fofi.org.au



VAN STEENSEL TIMBERS

EST 1965

EXPERT ADVICE AND
GOOD OLD FASHIONED SERVICE
DELIVERY ALL AREAS

TIMBER-HARDWARE-PAINTS-TOOLS-WATER TANKS

Cnr. Bass Highway & Glen Forbes Rd, Grantville 03 5678 8552
421 Princess Hwy, Officer VIC 3809 03 5943 2371

Bass Coast Post



Online news, articles, columns, photos by and for Bass Coast residents.

Release the Kraken

Mark Robertson



IF I were to design a totally alien species – given my formative childhood diet of B-grade sci-fi, James Bond and The Three Stooges – it would consist of writhing tentacles, green blood, huge eyes capable of ultra-violet vision, multiple hearts, a voracious parrot beak, jet propulsion, smokescreens, and the ability to change colour instantly.

Would it disturb you to know that just such a fantasy is lurking at your favourite swimming spot?

I am, of course, describing the fascinating (and tasty) southern calamari squid, a highly evolved invertebrate which resides in our truly special coastal waters.

The mythical Kraken was the nemesis of early sailors, a gigantic marine beast capable of turning a ship into matchsticks, and devouring the crew. It is thought to be based on the giant squid (*Architeuthis* sp.) a very real sea monster, growing more than 25 metres in length, and famous for its marine battles. Sucker marks the size of a rubbish bin lid have been found on sperm whales

and huge corpses have washed up on New Zealand beaches, making this denizen of the deep only too real.

Our local waters are host to several less intimidating species of Kraken (cephalopods), the arrow squid which live offshore, and spend their short lives either feeding or avoiding the jaws of mako sharks, barracouta, etc. The calamari prefer shallower, more placid waters, the seagrass beds of Western Port and the marine meadows of our Bunurong coast being more to their liking for feeding and breeding.

Did you know that the Bunurong hosts the third most diverse collection of marine plants on the planet? Yet another reason to marvel at and protect our special coast.

The calamari exists by the "live fast, die young" creed. Hatching from eggs carefully placed by their parents among the seagrass, they are ready to face a year-long life of voracious hunting of fish and crustaceans (basically anything smaller than themselves), while avoiding becoming a meal themselves, since many species, including humans, find a meal of squid simply irresistible. Most of them die after multiple spawnings, providing they survive that long.

One of my most memorable Kraken encounters happened while I was snorkelling at Harmers Haven several years ago. I happened across a tiny 3cm calamari, perfectly formed and obviously newly-hatched. It adopted the large black shape, allowing me to cup it in my hand, and

stayed close by for half an hour, seeming to be aware of the multitude of gaping mouths surrounding it. I hope it survived to pass on its genes and survival instinct.

To grow and mature so quickly the squid uses its huge eyes, camouflage and stealthy movements to hunt fish, sneaking up and rapidly extending its candles – catching tentacles – to ensnare its prey, then dragging it towards the sharp parrot beak for dismemberment and ingestion.

Due to its anatomy, the oesophagus passes through the squid's brain. Camouflage is enabled by chromatophores, pit-like structures in the skin which can open up to display a brownish colour, or rapidly contract for a more translucent look. The huge eyes can see into the ultraviolet spectrum, and keep a panoramic lookout for predators.

Slow, stalking movement is by means of rhythmic beating of flaps along the body, forwards or backwards. If threatened, however, a jet-propelled squirt of water from a siphon permits rapid escape from predators. The calamari can also deploy a smokescreen of ink, a black/brown compound known as sepia, to aid its escape. San Remo pier is stained with this ink.

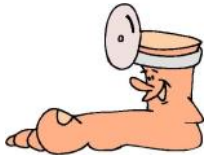
For many years, while the Greek and Italian communities knew calamari as a very tasty and sustainable seafood, we foolish Anglos regarded it as good only for bait, but the secret is now well and truly known.

Don't feel guilty about enjoying a feed of fresh calamari – if they grew bigger they would happily feast upon us! Fortunately Bass Strait is too shallow to host the real Kraken – or is it?

This work from Mark Robertson, first appeared in the Bass Coast Post, online In July 2016.

dc Coastal
hair & beauty
Now also at 1 Westernport Road, Lang Lang, Ring Grantville for appts.
5678 8847
shop 3/1509 bass hwy grantville 3984

Podiatrist
Michelle Graham B.App.Pod
Has relocated to
21 Billson Street, Wonthaggi 3995
Phone 5672 5114
General Foot Care, DVA (with GP referral)
Medicare (with GP referral)
Tuesday, Wednesday & Thursday by Appt.
HICAPS available
Discounts for concession card holders and WNFBS members (Please enquire at time of booking)



Philosophy, Trivia & Quiz,



Special Arts & Books Quiz.

1. Name the three primary colours.
2. In needlework, what does UFO refer to?
3. Name the famous ballet Russian dancer who changed the face of modern ballet?
4. What is the painting 'La Gioconda' more usually known as?
5. What does the term 'piano' mean?
6. Name the Spanish artist, sculptor and draughtsman famous for co-founding the Cubist movement?
7. How many valves does a trumpet have?
8. Who painted How Sir Galahad, Sir Bors, and Sir Percival were Fed with the Sanc Grael; But Sir Percival's Sister died by the Way?
9. If you were painting with tempera, what would you be using to bind together colour pigments?
10. What is John Leach famous for making?
11. What is the oldest surviving printed book in the world?
12. In publishing, what does POD mean?
13. Name the author of On Her Majesty's Secret Service, Doctor No and Thunderball, among others.
14. Which Shakespeare play features Shylock?
15. Who wrote the novel Death in Venice, which was later made into a film of the same name?
16. Who wrote the Vampire Chronicles, which include the novels Armand, Blood and Gold and Interview with the Vampire?
17. What is an e-book?
18. How tall would a double elephant folio book be?
19. Who wrote the contemporary children's books about mermaids set on the coast of Cornwall?
20. How old is the world's oldest dictionary?



The Cynical Philosopher . makes you think

- I read that 4,153,237 people got married last year, not to cause any trouble, but shouldn't that be an even number?
- I find it ironic that the colours red, white and blue stand for freedom, until they are flashing behind you.
- When wearing a bikini, women reveal 90% of their body... men are so polite they only look at the covered parts.
- Relationships are a lot like algebra. Have you ever looked at your X and wondered Y?
- America is a country which produces citizens who will cross the ocean to fight for democracy but won't cross the street to fight.
- You know that tingly feeling you get when you like someone? That's your common sense leaving your body.
- Did you know that dolphins are so smart that within a few weeks of captivity, they can

train people to stand on the very edge of the pool and throw them fish?

- My therapist says I have a preoccupation with vengeance. We'll see about that.
- I think my neighbour is stalking me as she's been googling my name on her computer. I saw her through my telescope last night.
- Money talks ... but all mine ever says is good-bye.
- You're not fat, you're just easier to see.
- If you think nobody cares whether you're alive, try missing a couple of payments.


Ian Adair , Coronet Bay.



ANSWERS

1. Red, yellow and blue. 2. An unfinished object. 3. Rudolf Nureyev. 4. The Mona Lisa. 5. To be played softly. 6. Pablo Picasso. 7. Three. 8. Dante Gabriel Rossetti. 9. Egg Yolk. 10. Pottery. 11. The Diamond Sutra, dated at 868 AD. 12. Print on demand. 13. Ian Fleming. 14. The Merchant of Venice. 15. Thomas Mann. 16. Anne Rice. 17. A book available in a digital, rather than printed form. 18. Helen Dunmore. 19. Helen Sumnerian-Akkadian word-lists have been dated to 2300 BC.

South Coast Speakers Toastmasters
 Meet on the 2nd and 4th Wednesday from 7.30 to 9.30pm at the San Remo Hotel, 145 Marine Parade, San Remo.
 If you would like to come to check it out, call **Brigitte 0421 812 691**
info@southcoastspeakers.org.au




Contact Jamie the TV Guy
8.00am to 8.00pm
0418 504 488

Special Offer.... PRINTED A4 Flyers

- Qty 500
- Full Colour 1 side
- 170gsm stock

= \$66 (incl. GST & delivery)

Call **0404 148 632**
 to discuss any printing requirements you may have



Unit 10, 1488 Ferntree Gully Road, Knoxfield Vic 3180
 Tel: (03) 8740 3461 | Mob: 0404 148 632
 Email: vered@minutemanpress.com

History

HISTORICAL SOCIETIES DIRECTORY



Bass Valley Historical Society
Libby Skidmore - 56780339
eskidmore@dcsi.net.au

Cranbourne Shire Historical Society
Tooradin - Fisherman's Cottage Museum
The museum is located in Foreshore Road on the edge of Sawtells Inlet (Melway ref 144 A6) and is open Sundays from 12noon to 4pm. Or by arrangement.
Contact - Polly Freeman - (03) 5998 3643

The Koo-Wee-Rup Swamp Historical Society.
Meets on the second Wednesday of each month at 7.30pm at Mallow house in Rossiter Road, corner of Henry Street. New members welcome. The Museum is generally open the second and fourth Sundays from 1.30pm until 4.30pm or by appointment.
Heather Arnold 0407 521 637
harnold@dcsi.net.au

Lang Lang & District Historical Society
Meets on the third Tuesday of the month at 1.30pm at the Lang Lang Historical Display Centre, in Whitstable Street, Lang Lang. The Centre is open each Wednesday 11am - 3pm or by appointment
Secretary Peter Hayden 5997 5114

Phillip Island & District Historical Society
Phillip Island Heritage Centre,
89 Thompson Cowes.
PO Box 816 Cowes, Vic 3922
Contact 5956 8501, 5956 9214
or 5952 3279

Wonthaggi Historical Society
Mail To: Secretary
40 White Road, Wonthaggi, Vic 3995
(PO Box 18 Wonthaggi 3995)
Phone - 5672 2009
Email: wonthaggihistoc@dcsi.net.au

Our History

With Libby Skidmore

"Cookery Recipes for the People"
Margaret J Pearson December 1889
(preface to the second edition)



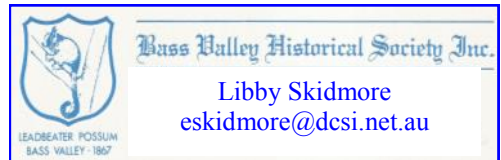
The knowledge of cookery, (now admitted on all sides to be a most important branch of a woman's education) is daily obtaining more attention in Great Britain as there are now in many large towns well established and supported schools teaching cookery both in theory and in practice. The interest in it has happily extended to the Australian Colonies, and it is with the hope of still further spreading it that I publish this the second edition of my work.

The recipes given are mostly based on notes used by me when engaged in teaching my various classes and they are planned with a view of filling a want which I feel is greatly needed in many households- I mean a small handbook containing correct and concisely worded rules, arranged in such a manner as to improve the general intelligence of the

pupils, and make the subject interesting and instructive to them.

Most of the recipes are tried ones which I can confidently recommend and which I trust will prove useful to my readers. The moderate of the book will also, I hope, carry it into those homes for whose benefit it is principally intended.

If such is the case I shall be amply rewarded for my exertions in seeking to make cookery better understood than it is at present by many young housekeepers in the Colonies.



BASS VALLEY HISTORICAL SOCIETY
DINNER MEETING
SEPTEMBER 1, 2017
\$25.00 per head **ALL WELCOME**

FRIDAY
SEPTEMBER 1
6.30 FOR 7.00

CORINELLA HALL
SMYTHE STREET
CORINELLA 3984

SPEAKER
JOHN JANSSON
"HISTORICAL SHIPPING IN WESTERN PORT"

PLEASE REPLY ASAP
TO ALLOW FOR CATERING
LIBBY SKIDMORE 56780339
10 KILBURN ST CORINELLA 3984
eskidmore@dcsi.net.au

www.flyawayscreens.com.au
Decorative Doors

Window Fly Screens
Fly Screen Doors
Diamond Grill Doors



Stainless Steel Doors
Guard Mesh Doors
Pet Doors

Richard Johnson

Mobile: 0409 590 055 Phone: 5659 0055

Re-meshing available



Welded Security Doors and Window Screens
Email: flyawayscreens@gmail.com

VET
CLINIC

WONTHAGGI
5672 1044

PHILLIP ISLAND
5956 7262

INVERLOCH
5674 2408

mail@wonthaggivet.com.au

History

Local Cemeteries

By Heather Arnold, on behalf of the Koo-Wee-Rup Swamp Historical Society



The Koo-Wee-Rup Swamp doesn't have a cemetery, I presume because it was too wet and swampy - so residents of the Koo-Wee-Rup Swamp could be buried at Pakenham or Cranbourne or Lang Lang or Bunyip depending on what area of the Swamp they lived.

The earliest cemetery was the Cranbourne Cemetery - the site for the Cemetery was reserved on December 11, 1857 and the following Trustees were appointed at the same time - Alexander Cameron, Patrick Thomson, James Smith Adams, William Sykes and Edward Malloy. William and Annabella Lyall are both buried at Cranbourne - they were the owners of Harewood house on the South Gippsland Highway which they built starting in 1865. A report of the content of his will (it was once quite common for newspapers to report this type of information) says that William Lyall 'directs that his body be buried in the allotment set apart on his property as a private burying ground and that as little expense as possible be gone to in connection with his funeral'. It doesn't appear that his wishes were adhered to in the matter of the burial as he has a substantial grave at Cranbourne. William died in 1888 and Annabella in 1916. Also buried at Cranbourne is Charles Rossiter, the source of the name Rossiter Road. He lived at Hawksdale at Koo-Wee-Rup from

around 1873 and was instrumental in having the first school in the area built on the corner of Bethunes Road and Bayles Road in 1884.

The site for the Pakenham Cemetery was reserved on February 13, 1865 and the first trustees were appointed on May 8, 1865 and they were John Startup, Richard Fortune, Michael Bourke, Thomas Mulcahy and George Ritchie. It is believed that the first burials actually took place in the 1850s. The owner of the Royal Hotel at Koo-Wee-Rup, Denis McNamara, was buried at Pakenham after his death on July 27, 1925. Mr McNamara had started a business in Koo-Wee-Rup in 1891, then left the area and returned in 1904 when he purchased O'Riordans store and in 1915 built the Royal Hotel. His funeral was described as one of 'the largest in the district, representative of every class and creed'. Charles Wadsley who died in 1944 at his home in Koo-Wee-Rup is also buried at Pakenham. Mr Wadsley was a Past Master of the Koo-Wee-Rup Masonic Lodge and 'an expert on asparagus growing' according to his obituary.

The Bunyip Cemetery site was officially reserved on November 22, 1886 and on December 6, 1886 the first Trustees were appointed - Joseph Williams, George Birch and James Barnes. This cemetery was used by folk living on the eastern end of the Koo-Wee-Rup Swamp such as Cora Lynn and Iona. The first official burials did not take place until eight years after the Cemetery was officially gazetted with the first one in March 1894. Of the first 20 burials in the register, 19 were children. This was a result of the high infant mortality rate at the time before vaccinations and antibiotics came into widespread use. Here is a sample of this depressing and sad list: William Barnes aged 6 - cause of death Diphtheria; Ethel Wayneith, 9 months - Marasmus (severe undernourishment); John Peart, 2 months - Marasmus; David Fallon 9 weeks - Marasmus; Ann Benham 10 months -

Pneumonia; Lily Norton 10 weeks - Whooping cough; William Heuson 4 months - Whooping cough; Denis McIvor 20 days - Meningitis; Mary Anne Mulligan 3 years - Diphtheria.

Lang Lang Cemetery site was reserved on December 5, 1887 and the first Trustees appointed December 10, 1889 were Thomas Poole, William Jones, Prosper Henry Victor Le Roux, Joseph Foster, William Norquay, Patrick McGrath, Edmund McGrath and Alexander McMillan. As a matter of interest the grandly named Prosper Henry Victor Le Roux is actually buried at Cranbourne. Christopher Moody - the source of Moody Street is buried at Lang Lang. He was a Cranbourne Shire Councillor. In 1890, Mr Moody owned the site of the Koo-Wee-Rup township and sub-divided the land between Rossiter Road and the Main Drain and Denham's Road and the Highway. Very little of the land was sold due to the 1890s depression. The sub-division set out Moody, Gardner (called Koo-Wee-Rup Street by Moody), Henry (called Christopher Street by Moody) and Salmon Streets.

The Koo-Wee-Rup Swamp Historical Society meets on the second Wednesday of each month at 7.30pm at Mallow house in Rossiter Road, corner of Henry Street. New members welcome. The Museum is open the second and fourth Sundays from 1.30pm until 4.30pm.

**Contact: Heather Arnold
harnold@dcsi.net.au 0407 521 637**



**BASS VALLEY
COMMUNITY GROUP**



**FRIDAY MORNINGS.
COMPUTER CLUB 10.00
- 12.00**

(No age restrictions) Informal computer learning and problem solving. Laptops, notebooks and internet access provided, or bring your own. Free tea and coffee. \$8.00 per week, (BVCG Members \$5.00). Bookings essential Phone: 5678 2277

Unique. The way travel should be



**Travel
Managers**
As individual
as you are

Kirra Moon-Curry
Personal Travel Manager

M: 0403 190 234

**E: kirra.moon-curry@travelmanagers.com.au
travelmanagers.com.au/KirraMoon-Curry**

Short Story Special

THE FINAL SOLUTION

Margaret Pearce



You get used to arguments. A large family attracts them like chooks attract rats. Arguments over television programs; whose turn it is to do the chores: Ma and Pa arguing over money, but we all got heartily sick of the arguing over the septic toilet Ma wanted.

Not that Pa was short, especially when the milk cheques came in. We went to decent boarding schools, and he gave Jim the top paddocks as a wedding present, but he always grumbled about money wasted on non-essentials.

The year all the cockies got a decent milk cheque, they took their families for overseas trips, and Rolls Royces and Mercedes littered their paddocks. Not Pa. He turned up with a 1935 Morris.

'Now will you stop nagging, woman,' he roared. 'Ere's your damn wheels.'

We reckon someone dumped it on the property. Anyway he got it going and kept it on the road for Ma right up to when it was sold as a valuable vintage, and Ma went back to using the big pickup for shopping.

Over the years Ma got a push button washing machine that lurched drunkenly in the old wash house, and a big range for the kitchen. There were always fancy beaters and blenders propped around on the kitchen bench where it didn't leak.

The cowsheds were painted up and concreted beautifully, and you could have done a white glove inspection of the milking machinery, but when light globes went around the house, Pa wouldn't replace them. The broken windows accumulated for about twelve months before he put a day aside to fix them all.

The biggest arguments used to rage after the milk cheques came in. Pa put in a nice modern bath, and there were gallons of hot water, but he always turned a deaf ear to the idea of putting in a septic. His attitude was if he didn't mind burying it every week, Ma shouldn't mind using it.

'The old pan dunny is no trouble,' he argued. 'Them fancy septics gotta have lots of drains dug, and have to be desludged all the time. Cost a fortune, so get off my back.'

Nance, our eldest sister backed Ma up. Nance was a real smart city slicker, with an important job.

'Look at you,' she raged at Pa one day, clacking back and forwards on her high

heels, her red tipped fingers pointing at him. 'You're like a gang of no-hopers on a rubbish dump. Broken down machinery rusting all around the house, and a dunny you can smell from the turnoff. I'd rather introduce my friends to the cow shed. At least you keep that clean.'

'Well introduce them to my cow shed,' Pa blustered back. 'I get a clean bill of health every year from the health inspector.'

'A nice thing when your daughter is ashamed to bring her friends home,' Ma attacked. 'All because you're too mean to build a proper toilet.'

'Nice friends she must have to judge us by our dunny,' Pa yelled back. 'If she had any sense she'd know who her best friends are.'

Pa stuck his nose in his paper and hunched his back. His definition of Nance's best friends was in the singular. He was very keen on young Fred Kelly from the farm across the hill.

'Good solid kid, young Fred,' Pa used to hint. 'If you married him we could merge the two farms across the creek paddocks.'

Nance always turned a deaf ear to Pa's hinting. Not that she had anything against Fred, except he was a cow cocky like Pa.

'Never marry a farmer,' she warned us younger girls. 'Or you'll spend all your days wading around in mud delivering calves, and cooking enough to feed an army for the rest of your life.'

Ma was going through one of her sensitive stages about the pan dunny again. Over the years, she had scrubbed it out with disinfectant, tied benches of lavender around the door, and poured so much Phenyl in you could smell it from the turnoff gate, or so Nance reckoned.

Anyway, one of Ma's friends told her that kero or petrol poured across the top kept down the smell. The only thing Pa had on the property was Dieselene, so we all adjusted to the smell of the Dieselene when we used the little house.

I met Nance's new boyfriend when I was at her flat, between boarding school and heading home. He didn't look anything much to me. Under his three-piece wool suit his shoulders weren't as broad as Fred Kelly's, and his eyes lacked the friendly twinkle Fred's had.

He was always fidgeting around, his eyes darting everywhere, and he chain-smoked acrid smelling cigarettes. He gave me an appraising look, before concentrating back on Nance.

Thomas had a very important job. Something to do with high finance. He

certainly had a high opinion of himself. After he bolted down Nance's nice steak and salad and two helpings of lemon meringue pie, he lit up his cigarettes and started his questions.

Where was her parent's property? How big was it? What was it called? How much stock did the property carry? How much new machinery did her father buy every year? How many people in the family?

He went on and on, almost as though he was grilling Nance before he gave her a loan. All the time he lit one cigarette after another until the entire place stank. Nance was pretty vague with her answers, until she accidentally let slip our nearest town.

'Now you've done it,' I said after he left. 'If he wants to visit, he's only got to hit the town. Anyone in the district will direct him to the farm.'

'Pooh,' sniffed Nance. 'As though I'd ruin my chances by taking him home.'

A few weeks later, Nance tripped in her fancy heels and broke her arm. So she came home. It was school holidays and we all were home as well. One night, just on dusk, the younger boys were pushing a ball around in the mud of our front yard and the rest of us wrangling over whose turn it was to set the table. Pa and Fred Kelly were sprawled on our ramshackle front verandah having a quick beer.

A big grey Mercedes lurched along the unmade track to the farm, and parked in front of the cowshed. It was a natural enough mistake. The visitor must have assumed that our old place was the cowshed.

'You girls set another place,' Ma interrupted us. 'We've got a visitor.'

Nance peered through the window. 'It's Thomas,' she gasped. 'How did he get here?'

'In a car, Ma snapped. 'Go and invite him in.'

Nance breathed hard and gave the rest of us kids a threatening look. Thomas had used the excuse of Nance's broken arm to track her down. She hurried out to lead him in the right direction.

Thomas was polite when invited to stay for dinner. Fred grinned and invited himself as well. Thomas stopped smoking long enough to stuff into the baked lamb and vegetables, two helpings of apple pie and cream and then lit his cigarettes and started his incessant questions.

Continued page 28



SUGGESTION BOX

One of our astute readers sent an email suggesting we remind all readers that the online edition of The Waterline News features all pages in full colour. Back copies of every edition as well.

www.waterlinenews.com.au



Short Story Special



THE FINAL SOLUTION Margaret Pearce

Continued.....

Was the farm profitable? What was the size of Pa's milk cheque, and so forth? Pa fended him off pretty well, being used to less crude efforts from the tax people.

After dinner, Pa, Fred, Nance and Thomas retired to the lounge. After the dishes the rest of us drifted in. Fred gave me a wink, and relaxed back into his chair, his face getting that real slow stupid look to it as he listened.

Thomas was still working hard on Pa's finances. Perhaps he had sized Nance up as the rich farmer's daughter, owing to all the rubbish she had told him about her parent's property.

Nance started to look thoughtful. Fred was grinning. Nance flounced out of the room with a muttered excuse. As soon as she was gone, Thomas butted his half-finished cigarette, lit another and asked Pa something. Pa nodded his head in the direction of our dunny, which is up the back past the wash house,

'Nice fellow Nance's got there,' Fred said with a grin. Pa just snorted. 'Won't take him long to get as fond of your milk cheque as he is of Nance.'

'Cheeky beggar,' Pa muttered. Nance came back. She had brushed her hair and freshened up her lipstick. Pa gave Nance a sharp glance.

'He smoke all the time?' Pa asked.

'It's his nerves,' Nance explained.

Pa got a funny look on his face, and puffed at his pipe. Suddenly, the peaceful silence was broken by an explosion and an ear-piercing scream.

'Third World War's started, Pa,' one of the boys yelled.

'The dunny's on fire,' another of the kids yelled.

'Our chain smoker must've thrown his butt into the Dieselene,' Pa mused.



It took Nance a few seconds to work out what he was talking about. She went white and then red. She looked at Fred. He was writhing in his chair as though he was having a fit. Nance rushed out the back. Pa, Fred and I

followed more slowly.

The dunny was lurid against the night sky. I've never seen such a decent bonfire. Of course the building was very old, and tinder dry. Ma and Pa had been fighting over that dunny longer than my lifetime.

Silhouetted against the glare was the staggering figure of Thomas. All his nice suit had been burned, especially off his back. His face was black with smoke and his red rimmed eyes glared out with pain and rage. Tears left white streaks down his blackened face.

The younger kids started to giggle. Pa and Fred cleaned Thomas up, put some stuff on his burns, and bedded him in the spare room to settle his shattered nerves. Not that they could have been too shattered, the Mercedes was missing the next morning, even before the younger boys were out with Pa to help with the milking.

After the milking was finished, Pa got to work. Fred helped Pa dig the drains and build the new toilet just off the back verandah. Fred then helped Pa restump the house, fix the leak over the kitchen and paint inside and out.

Ma was in seventh heaven. She had her new septic toilet at last. She whipped up date scones and sponges for morning tea, fruit cake and butterfly cakes for afternoon tea and we always had two choices of sweets every meal.

'Got to feed the men,' she said.

All the building and repairs took three weeks, by which time Fred had gained a good twelve kilos on Ma's cooking, most of it around his shoulders and Nance was sporting an engagement ring.

Pa was as expansive as I've ever seen

him. 'You can include America in your honeymoon,' he told Fred and Nance.

'We'll have the creek acres for a wedding present,' Nance said coolly.

'Done,' Pa said, looking pleased. Anyone would think she was offering him a double up on his milk cheque. 'What about a little sports car to run around in. Gotta visit us once you marry.'

'We're going to stay home and build a place on the hill,' Fred drawled.

'I'll carpet it for you. Gotta be comfortable,' Pa said smartly.

'You can pay for the toilet block, Pa,' Nance suggested. 'First thing I'm having built.'

'Waste of money,' Pa scoffed. Nance glared at him. Pa backed down. 'I was only joking,' he apologized. 'I'll stake you the most splendid dunny since the Arabian nights. Can't risk blowing up your visitors.'

For once Nance didn't have a back answer.

Email: mpearceau@gmail.com



@realty

DANIEL & TAMARA LESKIE

THINKING OF SELLING
YOUR HOME?

DON'T SETTLE FOR SECOND BEST!
CALL DANIEL & TAMARA
5678 0219

- ✓ Sold in 8 days of listing
- ✓ Sold off the market
- ✓ Sold off Facebook
- ✓ Sold above market price
- ✓ Sold first open



FREE
QUALITY
MARKETING



The Rustic Cacao Factory and Cafe

Loch Village

We use the old-fashioned way Of making Handcrafted Drinking Chocolate with raw cacao and Australian Spices. Enjoy a "free tasting" at the Café.

The Rustic Cacao Factory and Café also offer tasty meals on the barbecue and you can give your lunch a kick with any of 20 varieties of the World's hottest chilli

Open: Friday,
Saturday, Sunday
and Public Holidays
10.00am - 4.00pm
Bookings
Phone 0478 899 821

Book now

Our part of the world

A monthly message from our Mayor Cr. Pamela Rothfield



With recent milestone of the 50th anniversary of the Phillip Island and District Historical Society, it gave me reason to pause and reflect on the value of our local history.

I do not know what future direction local historical societies and museums will take in this the digital age – but I do know that we must welcome new technologies and embrace any change so that we continue to be relevant to future generations.

So congratulations to the Phillip Island and District Historical Society in making this milestone and here's to the next 50 years.

Pamela Rothfield

Local history just happens to be one

of my passions – one that, at present, I get precious little time to enjoy – but the great thing about history is that it's constantly in the making and it does wait for you. Through our local historical Societies, we learn to understand the challenges faced by those who went before us. Local history gives us a sense of belonging. The stories of our early pioneers tell us something about how people lived, they paint a picture of bygone days, and they are personal and compelling.

Back in the 1920s, Lewis Mumford, who was a great writer, on the subject of local history, wrote:

All of us feel that there is no sweeter meat than that which clings to our own bones. It is this conviction that gives value to local history: we feel that our own lives, the lives of our ancestors and neighbours, the events that have taken place in the particular locality where we have settled, are every bit as important as the lives of people who are recognised for their fame and fortune - no matter how insignificant we may seem alongside them.

The value of local history cannot be overstated. There will always be an important role for our historical society in our community and to the volunteers who devote their time and energies to its protection and preservation we are grateful and thank you sincerely!

Burgess Motors
Automotive Repairs

Phone 0455 544 194
Lot 2 Fact. 4 Grantville Dr.
Grantville Vic. 3984

Our Road Rules

Courtesy RACV



WHAT'S THE ROAD RULE?

Many intersections have a solid white line between the lanes leading up to the intersection. What are the road rules associated with these? Mark

Continuous lines along a lane are to prevent drivers from changing lanes.

A driver must not change lanes or cross over a continuous lane line. The Rules do outline exceptions, which include such situations as:

- avoiding an obstruction;
- obeying a traffic control device on the lane they are moving from;
- there is a special-purpose lane (bus, bicycle lane etc) the driver is permitted to drive in and they are moving to or from this lane – including part-time lanes;
- the rider of a motorbike is lane filtering where allowed; or
- the driver is permitted to drive in both lanes because of another rule.

Emily McLean

Grantville & District Ratepayers & Residents Association Inc.

GENERAL MEETING

Thursday 31 August
Grantville Hall
7pm
Guest Speaker
Jasmine Butler
Bass Coast Shire Council
“Grantville - your wish list”
gdrrasecretary@gmail.com

The Grantville & District Ratepayers & Residents association is holding its next general meeting on Thursday 31 August, in the Grantville Hall, at 7pm.

The 2017 Committee have been successful in increasing membership and have changed the format and now hold bi monthly general meetings, with a guest speaker at each meeting. Why not come along and join up at the next meeting?

Cranbourne Exhaust Pty. Ltd. (Inc. in Vic.) trading as

FASTFIT
CAR CARE

Standard, custom and performance exhaust systems
Complete brake and suspension service
Full vehicle repair service, log book servicing

Ted Watson
NEW ADDRESS 1b Loch Street Cranbourne
Telephone 5996 4555



POET'S CORNER

Submissions welcome
editor@waterlinenews.com.au

Harry the Hairy Huntsman



A hairy scary huntsman came into my room one night
 An evil hairy scary thing he gave me quite a fright
 I watched him as he crawled along the ceiling and the wall
 I watched every single step , and hoped he didn't fall
 I watched him still when I got up but saw he hadn't moved
 I thought that maybe he was dead , my fear had now improved
 then all at once he scurried down the wall beside my bed
 At least down there the huntsman wouldn't fall upon my head
 I quickly searched around my bed , I didn't want to find this hairy scary huntsman on my pillow or behind my bedhead or my pillows , I would break into a sweat
 I'm still searching for the huntsman see I haven't found him yet
 Last night I had a dream about a huntsman big and scary, he said "My name is Harry, but my friends just call me Hairy
 I'm sorry if I scared you see I'm here to eat the flies and bugs that crawl around your room and get some exercise
 We sat and talked for hours me and Harry known as Hairy and as we talked this Hairy Harry wasn't even scary
 He wasn't here to frighten me or bite me in my bed and it was just an accident if he fell on my head
 I keep him in my bedroom now and hide him out of sight
 I don't think mum would understand she wouldn't think it right
 You see the spiders freak her out , the big the small, the hairy
 She doesn't know him like I do , he really isn't scary

Marty Boyce (c) 2013



When Jesus Walked On Water

When Jesus walked on water
 did he upon the waters pace,
 each foot in place, alternately,
 before,
 behind,
 sedately -
 or did he - kind of - glide?
 knees bent,
 tendons taut with timing currents, wind?

When Jesus walked on water
 on the sea of Galilee
 it was not millpond smooth; but roared
 with mighty waves -
 as on the night he stilled the storm
 to still the fears of fishermen on board,
 of Peter, James and John.

To walk on water is no doubt
 a miracle.
 Divine. And very brave -
 with or without a wave.
 The church with one accord declares it so.

Although
 I often wonder as I watch
 divine young men:
 knees bent,
 tendons taut with timing currents, wind
 (men who have sinned)
 perform their miracles with sea:
 did Jesus ride a surf board there at Galilee?

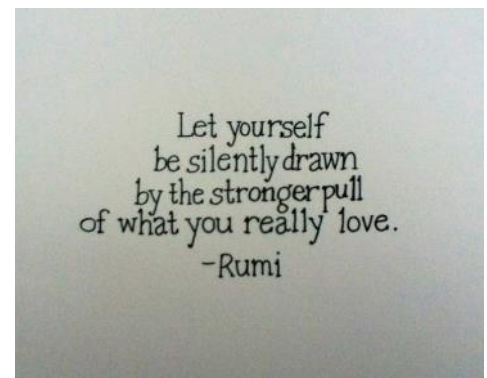
© Joan Katherine Webster

Blue Smoke

Blue smoke - the grey of gumtrees on the hills,
 Mellow as the evening which it fills,
 Summer's shade -the ghost of leafy days
 That haunts the Autumn landscape with its haze.

Blue smoke - that soaks the afternoon with musk,
 Seeping into crevices of dusk,
 Mingling with the mists to smudge the sky -
 And fill the air with April passing by.

(c) Joan Katherine Webster



HAIKU

Thoughts in miniature
 A haiku is untitled and unrhymed.

A seasonal word or reference associated with nature should appear in the haiku, and contrasting images may be used. Usually the first line stands alone while the second and third connect to give an aspect of that image.

俳句

haiku

Coastal 3

ship in the channel
 slapping the breakwater
 the rolling wake

standing on the bridge
 thunder and shake of traffic
 a cargo ship beneath

leaving the island
 churning wake of ferry
 a long goodbye

coal-red
 full moon's rim
 breaks the horizon

Janet Howie

Haiku Group, Society of Women Writers, Victoria



The False Friend

So gently, so softly he arrived
 A welcome guest bearing
 Gifts of arrogant youth, energy and life,
 And the promise of so much more.

What false friend would steal back
 Gifts bestowed so lavishly?
 That Indian giver taking back everything
 Irretrievably gone forever.

That merciless soft-footed thief
 Sneaking past smug assumptions
 Breaking the locks to my most
 Cherished and hidden treasures.

Those acquisitive hands always
 Tainting, caressing, tasting with relish
 Stealing back gifts one by one,
 Leaving me bereft and bewildered.

Mourning my emptied treasure chest
 Left with the ageing gold of memories
 Darkened by regrets and desolate grief
 Stolen by time, that duplicitous thief.

Margaret Pearce

Writing

The Writings of E.E. (Betty) Caldwell.

We have been lucky enough to secure the rights to some more of Betty's writings, with special thanks to Maree Silver who has done all Betty's typing for her.



After retiring from fulltime employment in 1983, Elsie Elizabeth (Betty) Caldwell took up voluntary occupation with the Adult Migrant Education as a tutor of English as a second language. From there, she went on to join the Stories on Aging group of writers, The Society of Women Writers Victoria and the U3A City, Melbourne, where she is currently a tutor of the Wednesday Writers Group. Her collection of fiction includes Home is the Teacher and its sequel Back to Coverdale, and Lily, and approximately 160 short stories, plus a similar number of articles covering a wide range of subjects. She appeared in the Inaugural State Edition of Who's Who in 2008 and every year since then in Who's Who of Australian Women.

THROUGH DIFFERENT EYES

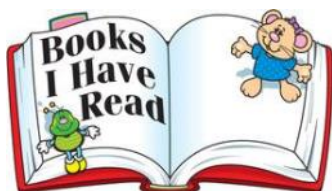
Washing and drying the dishes each evening provided Dad and me with that time for catching up on the day's events and an occasional exchange of ideas.

I had been toying with the hypothetical situation in which I was the only adult left with a handful of young children in an otherwise destroyed world. Harvey's discovery in 1628 of the blood's circulation was such a colossal benefit to mankind that I decided it to be the first lesson.

I didn't mention this to Dad but asked what he would teach the children in such circumstances. Without a moment's hesitation, he looked up from the soapsuds and said, "How to grow things."

Humbled by his practicality, I was reminded that conclusions reached in committee are usually better balanced than those of an individual.

© E E CALDWELL



Have you heard of Paint & Sip?



It's fun, it's relaxing and it's inspirational.

You don't have to be creative, you don't have to be able to paint... you just need the curiosity and courage to have a go. I'll do the rest... and you'll create your own painting in just one 3 hour session.

Hello, My name is Chris Petrie. With my wife Jackie, we run Paint & Sip, a small creative-arts business operated from our cosy home art-studio in Coronet Bay. Nearly all our participants arrive having done nothing creative since being a kid at school. And at school, were often made to feel inadequate and uncomfortable due to a perceived lack of ability, a snide comment from a fellow student or unfortunately, even a teacher.

WRONG..! I believe we are all creative in different ways. We just need a little encouragement and a supportive atmosphere in which to explore creativity in a fun and social environment.

Paint & Sip is ideal for getting together with your friends/family/group/team/club or colleagues.

Prior to the session, participants each choose an image from our catalogue and on the day I teach them how to paint it in just 3 hours. The atmosphere is always one of mutual encouragement, admiration and support. And the results are just amazing. So many people tell me that they would never have believed that they could produce a painting so wonderful. They love the welcoming atmosphere, the fun and laughs, the banter, the comradery and of course the music. Jackie and I look forward to hosting you and your group in the near future.



NO EXPERIENCE NECESSARY

- Groups of four or more (up to eight)
- Choose an image from our inspirational catalogue
- Start and finish your painting in just one 3 hour session
- All materials supplied
- BYO drinks and nibbles
- \$50 per person

SESSION TIMES:

Fridays 7-10pm, Saturday & Sunday 1-4pm or by appointment.

You can view our inspirational catalogue at: www.paintandsip.com.au

Read what others are saying at: <http://clk.im/Review>

Get your group together... and let's get creative!

BOOKING DETAILS

email: chris@paintandsip.com.au or phone 0400 789 700



Testimonial: Thank you Chris & Jackie for a great night out. We had so much fun creating our little artworks. I was so nervous that I wouldn't be able to do it but I was so at ease. It was great to learn new techniques. A perfect class for beginners through to advanced in a fun, laid back environment. PS. Great music selection!!! Tam

Paint & Sip

Fun • Relaxing • Inspirational

Absolutely NO experience required..!

CORONET BAY

- Create a painting in just one 3 hour session
- Choose an image from our extensive catalogue
- All materials supplied
- BYO drinks • Groups welcome
- Max. 8 per session

BRING A FRIEND AND BOTH RECEIVE 10% OFF

CATALOGUE & BOOKINGS:

www.paintandsip.com.au

E: chris@paintandsip.com.au

Environment issues



**Grantville & District
Foreshore Committee of Management**

Chairman: Eric Hornsby.
Treasurer: Roger Hayhurst.
Secretary: Barbara Coles
General Committee Members:
Dr. David Bourne, Ian James, and
Dr. Eric (Tim) Ealey.
<http://www.gadfc.com.au/>
No Report this month



Grantville foreshore erosion – what’s at stake?



The big picture

“Western port is a unique feature on the Victorian coast, a large, semi-enclosed embayment on an exposed coastline, formed by complex geological processes. Superficially similar to Port Phillip Bay, it is more complex than its western neighbour, with a greater tidal range, extensive intertidal mudflats, and two large

islands (Phillip Island and French Island). The tidal flats are cut by deep channels, with several catchments draining (some artificially connected) into the north eastern and eastern parts of the bay. All of this makes for complex oceanographic circulation. Much of its coastline is fringed by mangroves and saltmarshes, and there are extensive seagrass meadows on the mudflats and below the low tide level.”
Source: Understanding the Western Port Environment – A summary of current knowledge and priorities for future research. Melbourne Water Corporation, 2011.

What has Ramsar got to do with it?

“The Convention of Wetlands of International Importance, also called the Ramsar Convention, is an intergovernmental treaty signed in 1971 for ‘the conservation and wise use of all wetlands through local, regional and national actions and international cooperation, as a contribution towards achieving sustainable development throughout the world.’ Australia is host to many Ramsar listed sites, three of which are Western Port, Port Phillip Bay (Western Shoreline) and Bellarine Peninsula.”
Source: New site management plan for iconic Western Port – Commissioner for Environmental Sustainability Victoria, 2017.

At a local level

Those attending the Department of Environment, Land, Water & Planning (DELWP) Grantville foreshore erosion prevention Planning workshop (1 July 2017), appreciated the opportunity to discuss the matter and it highlighted some differing views on how to save Grantville’s foreshore.

In an effort to help everyone appreciate the environmental consequences of any erosion mitigation measures, some felt this could be achieved if they had the chance to ask a ‘subject expert’ to clarify the various approaches tabled. It was suggested a way to achieve this would be to have a Question and Answer (Q&A) forum and invite an independent ‘subject expert’ to present their case and answer questions, for whatever ‘action plan’ is devised by DELWP, there

was a general feeling that not only does it need to alleviate the immediate problems confronting those bordering the foreshore, but also ensure that any measures introduced would help sustain the long-term survival of Western Port and its Ramsar wetlands.

Which expert?

A coastal geomorphologist: studies the morphological development and evolution of the coast as it acts under the influence of winds, waves, currents and sea-level changes.

A marine ecologist: researches aquatic systems focusing on how water organisms interact with their environment.

A coastal engineer: develops appropriate techniques to mitigate coastal erosion and can cite the environmental impacts of such projects.

If one or more of these ‘experts’ could be persuaded to participate in a Q&A, what question(s) would you like to ask?

Can you suggest another ‘expert’ or stakeholder that should be invited?

Please send your response to the Friends of the Environment:

fotenviro@gmail.com who will compile the ‘responses’ and report the outcome.

Open letter to Dr. Galitis

Dear Dr. Galitis.

Thank you for your reply (Letter to the Editor - The Waterline News, July 2017). I appreciate your advice on my layman’s approach to an environment issue. To further assist with the discussion and to help more people understand the issue, I would like to invite you to be a Guest Speaker at the next gathering of The Friends’ Group-Western Precinct, Corinella.

RSVP: 5678 0592.

Neil Daly
Corinella



Gordon Chase - Chase Computers (03)56787097 or 0430168345

www.esahc.com
gordon@esahc.com

Computer and related hardware
Software provision and installation
Network and internet connection
Email configuration

Preventative maintenance
Repair and upgrade
Website setup, maintenance and support
IT support when you need it



Bass Coast
People's Choice
TRADES & SERVICES
2013 2014 2015 2016

**WE COME TO YOU
NO FIX - NO FEE***

*conditions apply

Chase Computers

Greg Hunt MP



**Federal
Member for
Flinders
Minister for
Health.
Minister for
Sport.**

I am delighted to announce that the Cardinia Shire Council was successful in securing funding through the Building Better Regions Fund for the development of a new pavilion within the Recreation Precinct at Lang Lang.

This funding will contribute to the overall development of the reserve, which will include football, cricket, netball, tennis facilities and wetlands as well as hosting regional events.

The pavilion will provide universal access with unisex change facilities, a multipurpose community space and large event capacity.

Its design will be both environmentally sustainable and aesthetically pleasing and will boost jobs in the area both during the construction phase and upon completion. This project is a significant investment into the local area that will provide a state-of-the-art multipurpose community and recreation facility.

We have also committed \$3.5 million to build a dual-lane roundabout in Cape Woolamai, matching a funding contribution from the Victorian Government, bringing the total to \$7 million.

This is a fast-growing area and Phillip Island Road has long been problematic for both locals and visitors, with 121 recorded casualty crashes in the 10-year period to March 2016.

Collisions have resulted in serious injuries and delays of several hours for motorists travelling on and off the Island.

The Turnbull Government has committed \$75 billion to crucial transport infrastructure projects, helping cut travel times, drive business efficiencies and save lives.

This project will help to reduce queuing,

decrease accidents, lessen travel times and allow residents and visitors to get safely to and from Phillip Island.

I had the pleasure of visiting Tooradin recently, where I met with a number of local groups and community members about projects they are developing. I am always amazed at the talent and ingenuity that comes from this part of the electorate.

I try and make myself as available as I can to local residents and welcome you to come to me with your thoughts, ideas and projects so I can assist in helping to make them a reality.

If I can be of assistance to you in any way please feel free to contact me:

Greg Hunt

**4/184 Salmon Street (PO Box 274)
Hastings 3915**

**Email: greg.hunt.mp@aph.gov.au
Tel: (03) 5979 3188**

Website: www.greghunt.com.au

The Nic Nak Shack



Shop 2/107 Marine Parade
San Remo, 3925

Unique and quirky
giftwares
something for everyone
10% off storewide
AUGUST ONLY!
(conditions apply)

5678 5544 

Corinella Foreshore Jetty Precinct Corner Upgrade



Corinella Foreshore Reserve COM has been working toward completing the retaining wall and cutting back the corner on the exit path from the boat ramp.

This work will also allow for one further derigging lane when completed.

The area had become an issue due to the size of the vehicles and trailers using the facilities.

Although the successful funding application for this work was already underway, this component of work is listed as a part of the overall boat launching facilities upgrade. Committee will continue to seek assistance from relevant stakeholders to complete the plans and a funding application to complete the overall project.

Limited by pre existing stormwater pipes the area appears the have a limited return. Line marking and directional posts will assist traffic around the bend. The area will not be available for use until the end of August

Coast flax - lily (*Dianella brevicaulis*) have been re-established on the embankment after care was taken by the contractors to save them in the initial preparation of the area.

Committee continue to work toward the launching facilities upgrade.

Follow our progress on facebook or at www.corinellaforeshore.com.au



Greg Hunt

**FEDERAL MEMBER
For FLINDERS**

**Phone:
(03) 5979 3188**

**Email:
greg.hunt.mp@aph.gov.au**

**Website:
www.greghunt.com.au**



Working together - getting results

K9 Pawfection

**Dog Wash, Grooming
& Clipping Service**

Coronet Bay

Available by Appointment

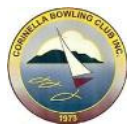
Phone Sandra on

0413 209 709



Sports & Leisure

CORINELLA BOWLING CLUB Inc. 2016/17 SEASON



22 Balcombe St Corinella.
T: 5678 0497.

Follow & Like us on our Facebook page - Corinella Bowling Club on Westernport or search for www.facebook.com/CBC.Westernport
Corinella Bowling Club Winter activities from May to August.

Contact Jacque Carter – 5678 0596
Enid Johnston – 5678 0118



FISHING

with
Craig Edmonds

Boating in Westernport

I get a lot of visitors to the shop from all parts of the state and country many of whom have been told all these stories that boating in Westernport Bay is dangerous because all you do is get stuck on the mud. Like anywhere you go boating it can be dangerous and Westernport Bay is no different but with a small amount of common sense it can be as safe if not safer than any other boating waterway. The best way to stay out of trouble is to ask someone who knows the area, and generally the local tackle shop is the best place to start. Whilst they might not be able to guarantee you will catch a fish, if you follow the instructions you are given, chances are you will avoid getting into trouble.

The most important rule in the bay is to follow the channel markers and to know what a danger marker looks like. If unsure slow down.

SINKERS

There are a few things you need to be aware of to have an enjoyable days fishing in Westernport Bay as it can be quite different to Port Phillip Bay. In Westernport we have current and lots of it and the biggest difference you will find when fishing is you actually need to use sinkers and I don't mean split shot but large pieces of lead. You will also need to change the size of sinker as the tide changes and you will need to use different size sinkers in different parts of the

bay. As a general rule when you are whiting fishing you are generally in the shallow areas of the bay, often as shallow as 1m and you generally use sinkers from 1/2oz to 3oz. When you are chasing snapper or gummies you will need 4oz to 8oz in the shallower spots and 8oz to 16oz in the deeper channels with all of the above dependant on the time of the tide.

The biggest advantage we have in Westernport is we have an island in the middle and although it can still get quite rough it is generally a short chop which can be navigated safely. It also means there is generally somewhere you can go to fish. The trick is to know what stage the tide is at and the wind direction as this will determine the safest place to be. Pick a spot in the bay where the tide and wind are going in the same direction as this will be the smoothest area to be, but be wary of tide changes as this can make a huge difference in a very short time.



<http://www.corinellafishing.com.au/>



Father & Son win Corinella Angling Club Championship

Corinella Boating and Angling Club held its annual general meeting and Presentation Night on Saturday 29 July and announced its club champions for the 2016-2017 season. Brian Kelson won the Junior Champion

trophy, and Rob Kelson took out the overall Club Champion award. The father and son duo are both keen anglers, and this is thought to be the first time a father and son



have taken out the championships in the same year.

Other award winners included Brian Ellis (biggest Flathead), Kane Ricketts (largest Snapper and Squid), Rob Kelson (Whiting), Gordon Forrester (Gummy shark) and Laurie Hartley (Trevally).

A new committee also came on board during the AGM. The new committee would like to thank the outgoing committee for their work and dedication to the club over the previous year.

The new committee are planning an active social and fishing calendar. New member enquiries are welcome.

Contact Secretary Allan Willoughby on 0419 601 500 or check the clubs website



GRANTVILLE MITRE 10

Open 7 days
Mon - Fri 7am-5pm
Saturday - 8am-3pm
Sunday 9am-3pm
Bill Humphrey
& Gary Skinner
5678 8213

Bass Highway Grantville



PETER C WEST
PLUMBING
Corinella

Small Job Specialist
40 Years Experience
Lic. No 22837
Phone 0419 307 615

UNDERSTANDING YOUR GARDEN James Middleton Buying Garden Tools Part 7

Advanced Tool - Electric Hedge Trimmer



This is a tool for the slightly more serious gardener but can be a very handy addition to your tool box.

A hedge trimmer is used to lightly prune hedges and shrubs to keep them neat. The job can be done very well with manual shears and I prefer the control and feel provided by manual shears, but for ongoing maintenance of medium to large gardens, an electric trimmer can significantly reduce the time it takes to maintain a garden.

What to look for in an electric hedge trimmer

The very first consideration to make when buying an electric hedge trimmer is how do you want your trimmer to be powered? There are 3 options and each option will suit a very different clientele.

Those three options are petrol, battery and electric power chord.

Petrol Electric trimmer

Petrol trimmers are usually the best choice for high use. They have the freedom of a battery powered hedge trimmer and the power of an electric chord powered trimmer. Obviously they need to be refuelled every now and then but this is less frequent than how often battery operated trimmers need to be recharged.

Simply put, petrol trimmers are the 'best' but because of this they are also the most expensive. Really, unless you are running a gardening business or have a vast backyard that doesn't allow the use of a power chord, you can probably utilise a battery or electric power chord trimmer for

the job, both of which are cheaper options.

Battery

Battery powered electric trimmers are much like cordless drills. They provide a very high quality operation but only for a limited time. The length of time the battery lasts after each charge depends on how hard you are working the tool, how much you are trimming off the hedges, and how thick the foliage that you are trimming is. If you only have a small amount to trim then a battery powered electric trimmer will probably do the job for you and they are generally the cheapest option. In fact most people I know who use an electric hedge trimmer own the battery powered version.

Electric chord trimmer

For gardeners with larger gardens to maintain it is probably worth spending a little bit more to buy an electric chord trimmer.

Though being tied to a chord makes the tool less manoeuvrable, you don't have to worry about the tool running out of power with higher use.

Cost of an electric hedge trimmer

Obviously, being a powered tool, the costs are on the high end of garden tools.

A cheap, battery operated hedge trimmer may be as cheap as \$100+.

A middle-of-the-range hedge trimmer will be \$200-\$300 and top of the range hedge trimmers will set you back \$400+.



<http://aussiegreenthumb.com/>






ASBESTOS REMOVALS

TOM CAVANAGH: 0419 961 258

METROSPEZY@GMAIL.COM

Plant of the month Grey Honey Myrtle



Genus: Melaleuca

Species: incana

Common Name: Grey Honey Myrtle

Flower Colour: Yellow and/or white

Foliage Colour: Grey

Growth Habit: Shrub to 2m

Flowering: Spring

The incana is shrub variety of Melaleuca and it has the most wonderful little yellow flowers, though a white flowered version exists as well.

The Melaleuca incana is native to Western Australia but can handle most climates and can handle sandy, gravel or clay soils. It definitely prefers more sun to shade, but can handle part shade.

It also looks fantastic planted with other Melaleuca varieties.

Try mixing and matching a few to get the desired look for your garden.



**Stihl Shop
Lang Lang**

2 Cambridge Street
Lang Lang,
Victoria 3984


Tel: (03) 5997 5691
Fax: (03) 5997 5691



**Your local sales and
servicing specialist**



**NEW Battery
Shear Trimmer \$179**



Samantha White
0422 332 792

445 Korrine rd
Glen Alvie 3979

**Cut n Edge
Lawn and Garden**

Cut n Edge Lawn and Garden

- Catcher mower and/or ride on mower
- Whipper snipping
- Maintaining gardens, weeding, trimming, planting, mulching ect
- Weed removal in lawns either by hand or chemical spray
- Great affordable rates and service with a smile
- Public liability insurance

Advertisers Index

AUGUST ADVERTISERS INDEX

Advertiser	Page
@reality AGENTS Tamara & Daniel Leske	28
Alex Scott Real Estate - Grantville	2
AP Progressive Plumbing	37
Avon - Di Thomas	19
Bass Coast Shire Council - New bins are coming	4
Bass Valley Computers	10
Bassine Specialty Cheeses (Farm Shop)	18
Bendigo Bank	40
B.J's Mowing & Garden Maintenance	37
Black Fish Medical Centre	4
Brian Paynter - State MP Bass	37
Burgess Motors - Grantville	29
Chase Computers	32
Corinella Air Conditioning & Electrical	36
Cut n Edge Lawn & Garden	35
dcCoastal Hair & Beauty - Grantville & Lang Lang	23
Evans Petroleum	37
Fast Fit Car Care & Exhaust	29
Flourishing Figures - Accountant & Tax Agent	2
Flyaway Screens	25
Focus on Lifestyle - Mobility Aids	21
Grantville Medical Centre	13
Grantville Mitre 10 - Hardware	34
Greg Hunt - Federal MP for Flinders	33
Greyhound Racing Victoria - Greyhound Adoption Program	38
Health & Wellbeing Counsellor - Ella Hayes	14
Howler Brewing Co. - Lang Lang	38
James McConvill & Associates - Legal	39
Jim's Bait & Tackle San Remo	34
Kernot Food & Wine Store	18
Kirra Moon-Curry, Travel Managers	26
K9 Pawfection - Dog Grooming	33
Le Serve, Clare - Local Ward Councillor	37
Lang Lang Funeral Services	1
Massage Therapist - Nici Marshall.	15
Metro Asbestos Removal	35
Minuteman Press - Printers	24
Mobile Auto Electrical - Peter Hayes	37
Nurse Practitioner - Deb Garvey	14
Newhaven College	3
Newhaven Hardware & Hire	36
Nik Nak Shack - San Remo	33
Over 60 Travel Insurance	18
Paint & Sip - Art Classes	31
Peter. C. West Plumbing	34
Podiatrist - Michelle Graham	23
Right Choice Mortgage & Leasing	4
Russell Sanders - Contractor & Block Slashing	36
Rustic Cacao Factory & Café	28
Safflower Chinese Medicine	15
S&P Heavy Mechanical - Grantville	37
Sassy Hair & Beauty	38
Stihl Shop - Lang Lang	35
Stockdale & Leggo (Judith Wright) Cows	17
Stockdale & Leggo - Grantville & Koo Wee Rup	40
Sunscape Electrical - Solar installations	2
The Dog Whisperer	19
Tides Restaurant - Tooradin	2
TV Guy - Antenna Installation Specialists	24
Van Steensels Timber & Hardware	22
Veterinary Clinics - Inverloch, San Remo & Wonthaggi	25
Vinyl Layer - Ivan Meddings	1

Advertising - editor@waterlinenews.com.au



**Corinella Airconditioning
& Electrical**

Gary Burchell
Sales, Service, & Maintenance
PH: 0407 976291
REC: 8483
corinella.aircon@hotmail.com
Plumbing: 48231

RUSSELL SANDERS

Contractor - 0418 549 499

- **4WD Backhoe & Tipper**
- **Slasher Hire**
- **Blocks Slashed**
- **or cleared**
- **Driveways built**
- **or repaired**
- **Site cuts and excavations**
- **Hydraulic grader blade**



643 Densley Road Woolamai 3995

Phone: 5678 2373

Email: russellsandersbackhoehire@gmail.com



NEWHAVEN HARDWARE AND HIRE

**34 BOYS HOME
ROAD NEWHAVEN
3925**



**ALL GENERAL HARDWARE AND PAINT
LARGE RANGE OF NAILS AND SCREWS
SOLD BY THE KG**

**OUR HIRE DIVISION HAS A LARGE RANGE
OF HIRE EQUIPMENT, INCLUDING SCISSOR
LIFT, CHERRY PICKER AND SCAFFOLD.**

**OPEN 7 DAYS A WEEK FOR YOUR
CONVENIENCE.**



**Phone:
5956 7177**

Email: dawn@newhavenhardware.com.au

BJ's Mowing & Garden

For all your lawn & gardening needs

- Household Lawns and Larger
- Green waste removal
- Weed spraying
- Friendly prompt service
- Obligation free quotes
- Competitive rates
- Fully Insured
- Servicing all areas from Grantville, Corinella and Coronet Bay to San Remo & Phillip Island

Call now
0414 463 395



Brendan Dwyer

Servicing all
Westernport



Pensioner
Discount
On
maintenance
jobs

Call Adam
0408 592 252

**"ALL YOUR PLUMBING
SOLUTIONS"**

MOBILE AUTO ELECTRICAL

BASS COAST AND
SURROUNDING AREA

WE COME TO YOU

4WD's
TRADE VEHICLES EMERGENCY
SERVICES CARAVANS
TRAILERS BOATS
FARM EQUIPMENT HORSE
FLOATS
VEHICLE REWIRING
45 YEARS EXPERIENCE

Call for a quote

PETER HAYES

Corinella Based

Mob: 0419 394 092

Email: outbackpete@bigpond.com



Evans Petroleum
Gippsland Pty Ltd
Phone (03) 5662 2217
Fax (03) 5662 225
Depots:
Leongatha Traralgon Sale

www.evanspetroleum.com.au



Heavy Mechanical

ON SITE & WORKSHOP SERVICE

- ⚙️ Cars & trucks
- ⚙️ Mechanical, electrical and hydraulic repairs
- ⚙️ Fleet maintenance

24 HOUR BREAKDOWN SERVICE

5678 8472 0488 003 129

**FACTORY 3 | 6-10 GRANTVILLE DRIVE
GRANTVILLE**



BRIAN PAYNTER MP

STATE MEMBER FOR BASS

Please contact my office if I can assist you with any State Government matters



talk to
BRIAN

🏠 9 McBride Ave, Wonthaggi 3995 📞 03 5972 4755
📧 brian.paynter@parliament.vic.gov.au 📺 @brianpayntermp

Authorised & Edited by Brian Paynter MP 9 McBride Avenue, Wonthaggi 3995. Tel: 5672 4756
www.brianpaynter.com.au. Funded from Parliament's Electorate Office and Communications Budget.

Cr Clare Le Serve
Western Port Ward

M: 0448 083 286
T: 03 5671 2155



clare.leserve@basscoast.vic.gov.au
www.basscoast.vic.gov.au

Bass Coast Shire Council Office
76 McBride Avenue, Wonthaggi 3995
T: 1300 226 278





**FIERCELY
INDEPENDENT**
**BEER
&
FOOD**



www.howlerbrewing.com.au follow us   @howlerbrewing Phone: 0447 478 585

BRING THIS IN TO RECEIVE
1 COMPLIMENTARY DRINK
WITH MEAL PURCHASE OVER \$15*
* Available Wednesday, Thursday & Friday lunch
Pot, House Wine, Tea or Coffee.

VISIT US AT:
47 Westernport Road, Lang Lang, 3984
HOURS
Wednesday - Thursday 10am - 4pm
Friday - Saturday 10am - 11pm Sunday 10am-4pm

Sassy Hair with Beauty



Hi my name is Tegan

I used to Manage Happening Hair and Beauty in Grantville, I have just ventured into working from home and am also offering mobile services. I have over 18 years experience in all aspects of hairdressing and beauty. For a free consultation or quote you can call or message me on 0404883783



Find a friend for all walks of life

Greyhounds are affectionate, loyal, lazy and extremely low maintenance, which makes them an ideal addition to any home.

For more information visit us at:
gap.grv.org.au



GAP
GREYHOUND ADOPTION PROGRAM

shop local
Small BUSINESS
support community
main street buy local
mom and pop
downtown markets
merchants stores
brick and mortar shops



JAMES MCCONVILL & ASSOCIATES
BARRISTERS & SOLICITORS

Personal legal service
covering **Bass Coast** and **Phillip Island**

—
For an initial free consultation contact

1800 754 401

or email us at mail@mccconvill-associates.com
(same day response guarantee)

—
We can visit your home, or another convenient location.

www.basscoastlawyers.com.au

Bendigo Bank Personal Loans.

Bringing your plans to life.

Life's a big deal.

At Bendigo Bank, we're all about how we can help you live it. That's why we offer personal loans for a huge range of purposes.

So, get busy living, with a Bendigo Bank Personal Loan. Because we'd love to help bring your plans to life.

Drop into your nearest branch at San Remo - 5678 5833, Cowes - 5952 3383 or Grantville - 5678 8773 to find out more.



 **Bendigo Bank**
Bigger than a bank.

San Remo District, Cowes and Grantville & District
Community Bank® branches

All loans subject to the Bendigo Bank's normal lending criteria. Fees, charges, terms and conditions apply. Bendigo and Adelaide Bank Limited ABN 11 068 049 178 AFSL/Australian Credit Licence 237879. (A2340 9105) (365161_v1) (27/07/2017)

bendigobank.com.au



**Stockdale
& Leggo**

real
estate

Most people
see real estate
agents as a
commodity



**Stockdale
& Leggo**

We are in a league of our own.

Contact us for a specialty service today.

**Stockdale
& Leggo**

We sell your home as if it's our own.

Koo Wee Rup

5997 1899

Grantville

5678 8700